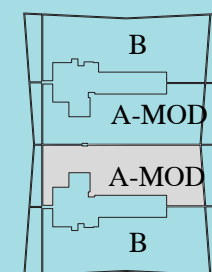
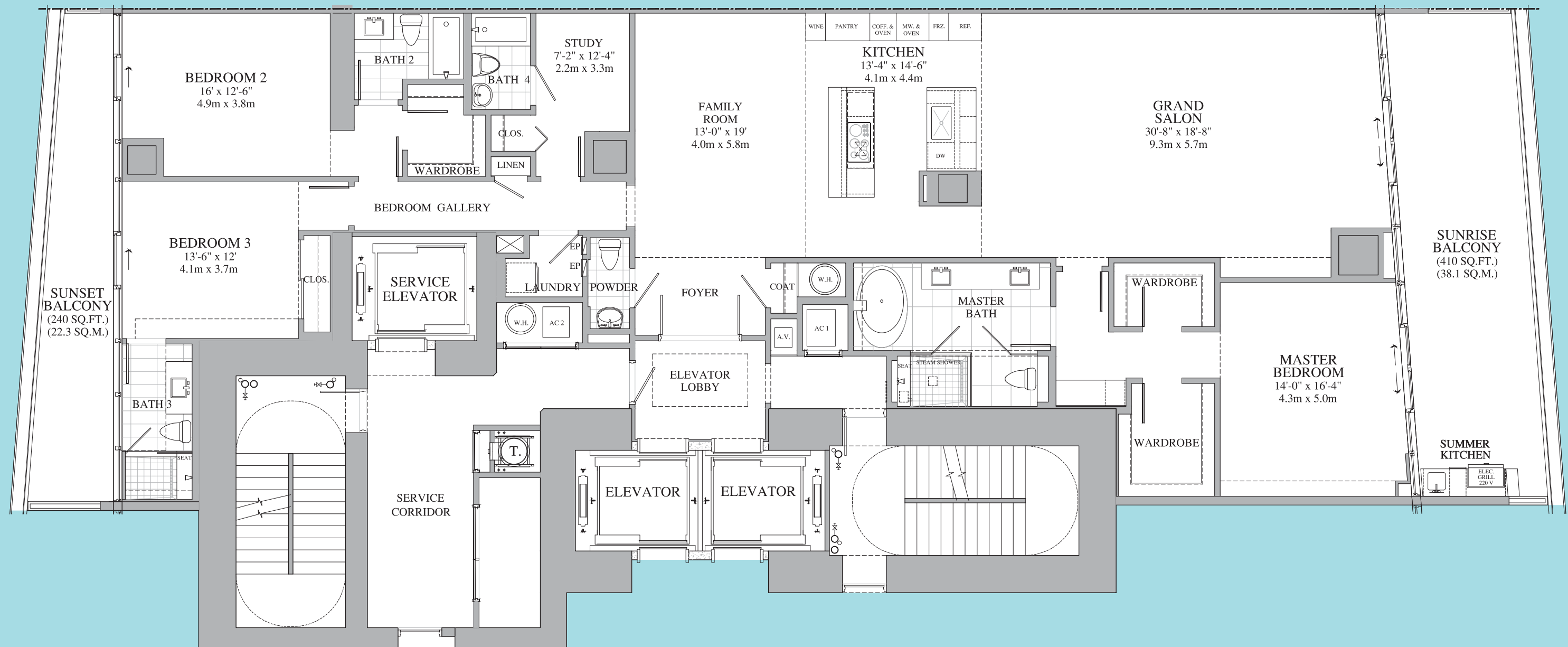


RESIDENCE A MODIFIED



UNIT 'A-MODIFIED'

INDOOR LIVING AREA = 2,900 SQ.FT. / 269.4 SQ. M.

OUTDOOR LIVING AREA = 650 SQ.FT. / 60.4 SQ. M.

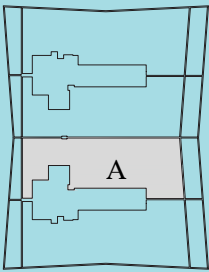
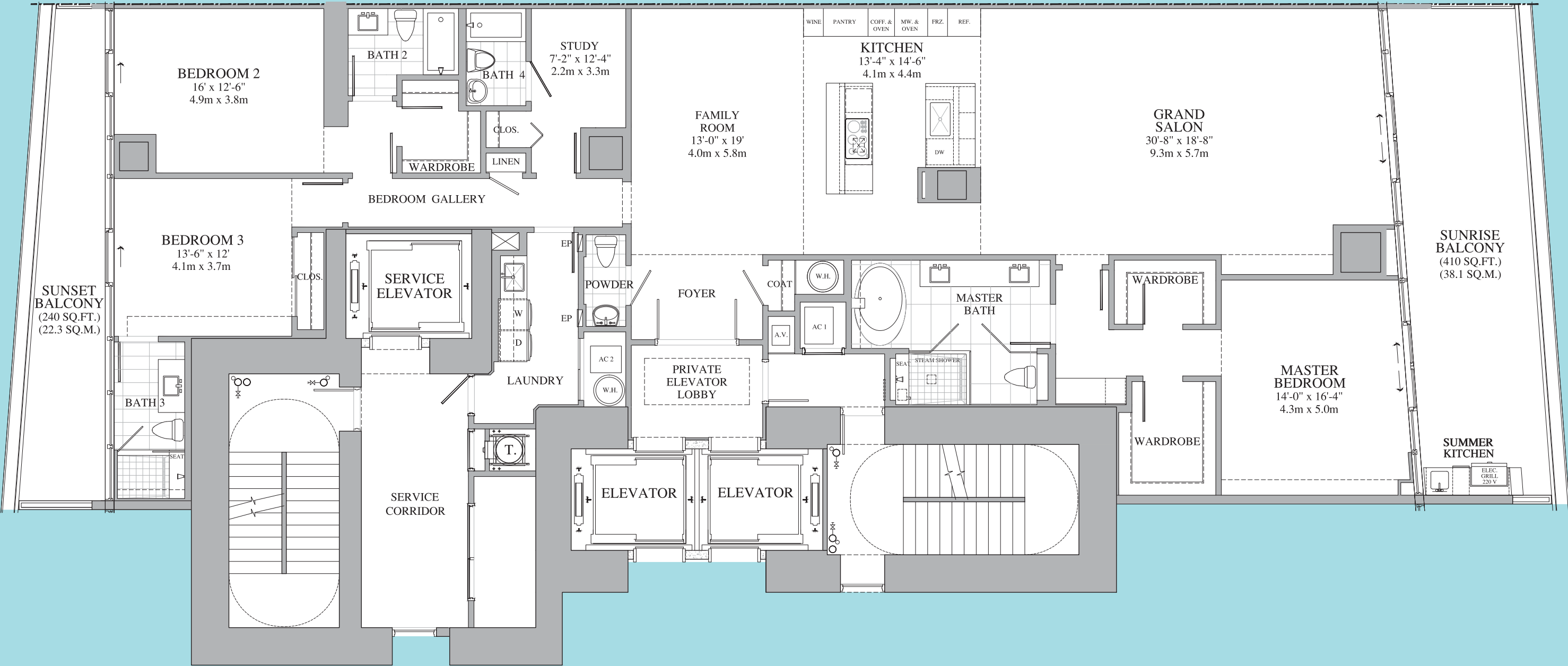
TOTAL LIVING AREA = 3,550 SQ.FT. / 329.8 SQ. M.

PAINT-TO-PAINT AREA = 2,589 SQ.FT. / 240.5 SQ. M.



ORAL REPRESENTATIONS CANNOT BE RELIED UPON AS CORRECTLY STATING REPRESENTATIONS OF THE DEVELOPER. FOR CORRECT REPRESENTATIONS, MAKE REFERENCE TO THIS BROCHURE AND TO THE DOCUMENTS REQUIRED BY SECTION 718.503, FLORIDA STATUTES, TO BE FURNISHED BY A DEVELOPER TO A BUYER OR LESSEE. THIS IS NOT AN OFFER FOR CONTRACT OR SALE IN THE STATES OF NY, NJ OR MASS.

RESIDENCE A



UNIT 'A'

INDOOR LIVING AREA = 3,110 SQ.FT. / 288.9 SQ. M.

OUTDOOR LIVING AREA = 650 SQ.FT. / 60.4 SQ. M.

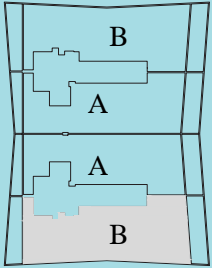
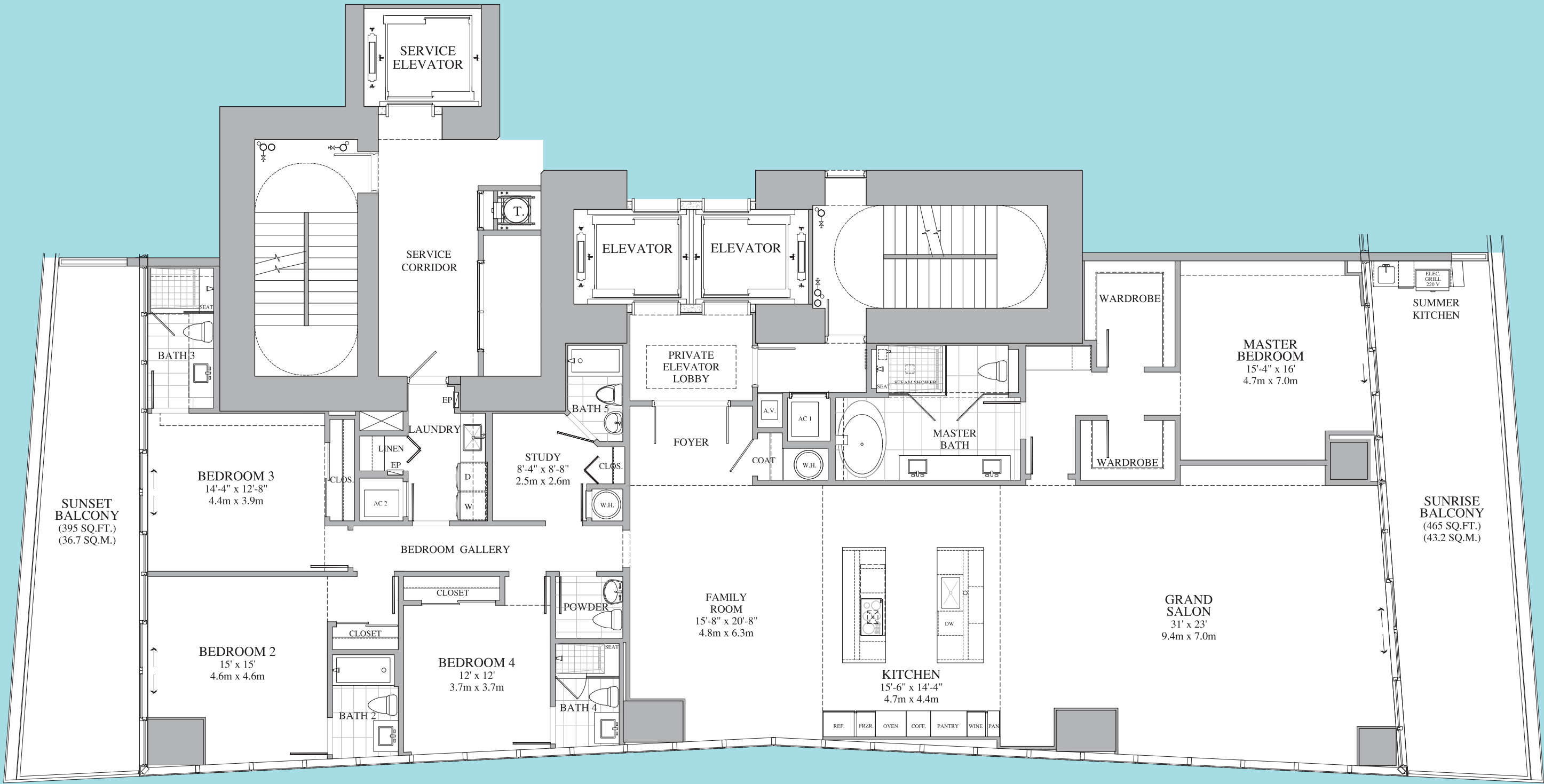
TOTAL LIVING AREA = 3,760 SQ.FT. / 349.3 SQ. M.

PAINT-TO-PAINT AREA = 2,797 SQ.FT. / 259.9 SQ. M.



ORAL REPRESENTATIONS CANNOT BE RELIED UPON AS CORRECTLY STATING REPRESENTATIONS OF THE DEVELOPER. FOR CORRECT REPRESENTATIONS, MAKE REFERENCE TO THIS BROCHURE AND TO THE DOCUMENTS REQUIRED BY SECTION 718.503, FLORIDA STATUTES, TO BE FURNISHED BY A DEVELOPER TO A BUYER OR LESSEE. THIS IS NOT AN OFFER FOR CONTRACT OR SALE IN THE STATES OF NY, NJ OR MASS.

RESIDENCE B

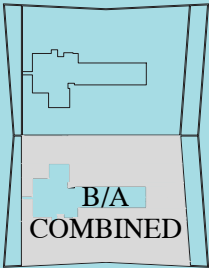
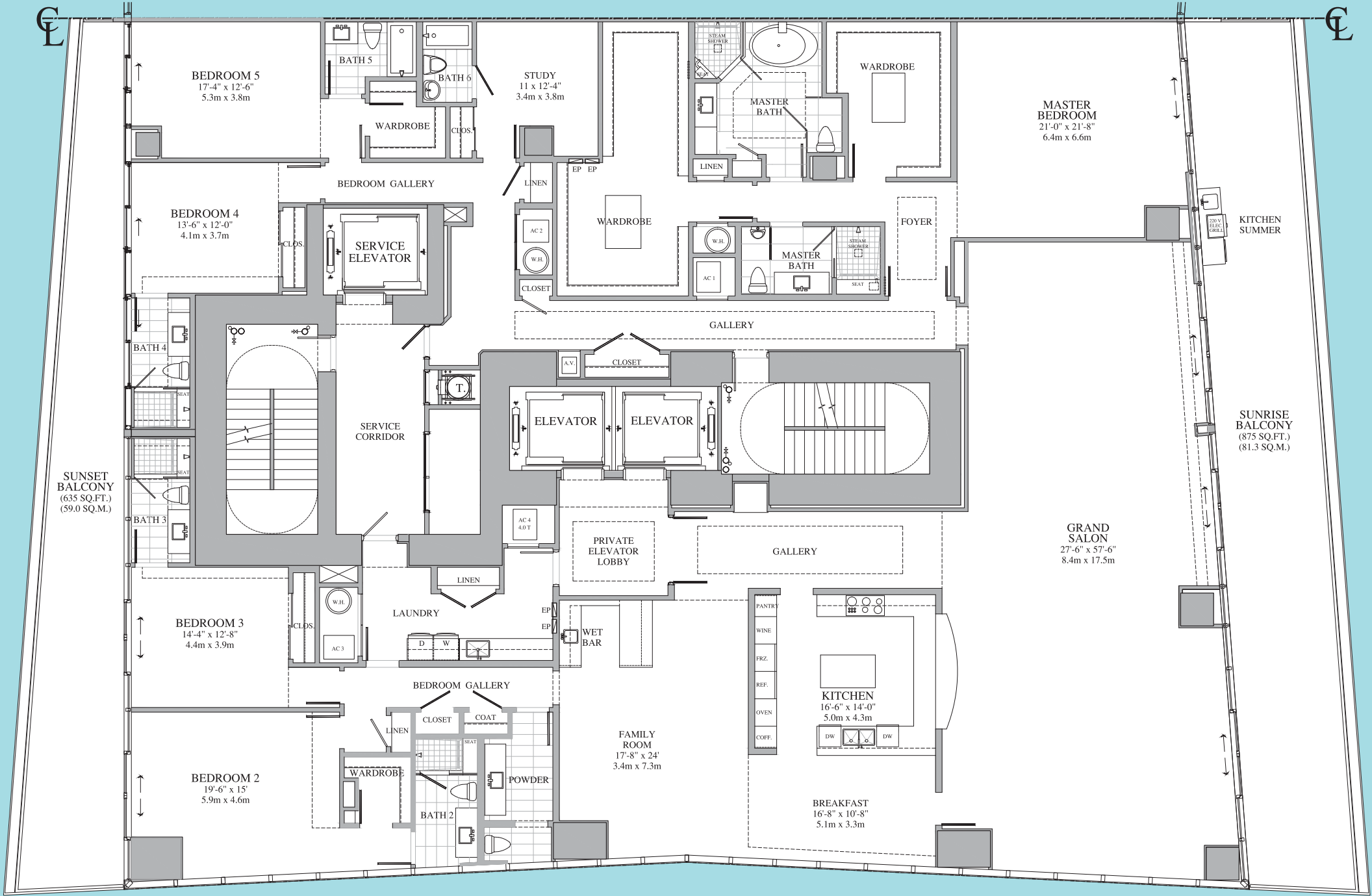


UNIT 'B'	
INDOOR LIVING AREA	= 3,625 SQ.FT. / 336.8 SQ. M.
OUTDOOR LIVING AREA	= 860 SQ.FT. / 79.9 SQ. M.
TOTAL LIVING AREA	= 4,485 SQ.FT. / 416.7 SQ. M.
PAINT-TO-PAINT AREA	= 3,252 SQ.FT. / 302.1 SQ. M.



ORAL REPRESENTATIONS CANNOT BE RELIED UPON AS CORRECTLY STATING REPRESENTATIONS OF THE DEVELOPER. FOR CORRECT REPRESENTATIONS, MAKE REFERENCE TO THIS BROCHURE AND TO THE DOCUMENTS REQUIRED BY SECTION 718.503, FLORIDA STATUTES, TO BE FURNISHED BY A DEVELOPER TO A BUYER OR LESSEE. THIS IS NOT AN OFFER FOR CONTRACT OR SALE IN THE STATES OF NY, NJ OR MASS.

UNIT B/A COMBINATION



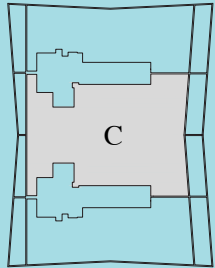
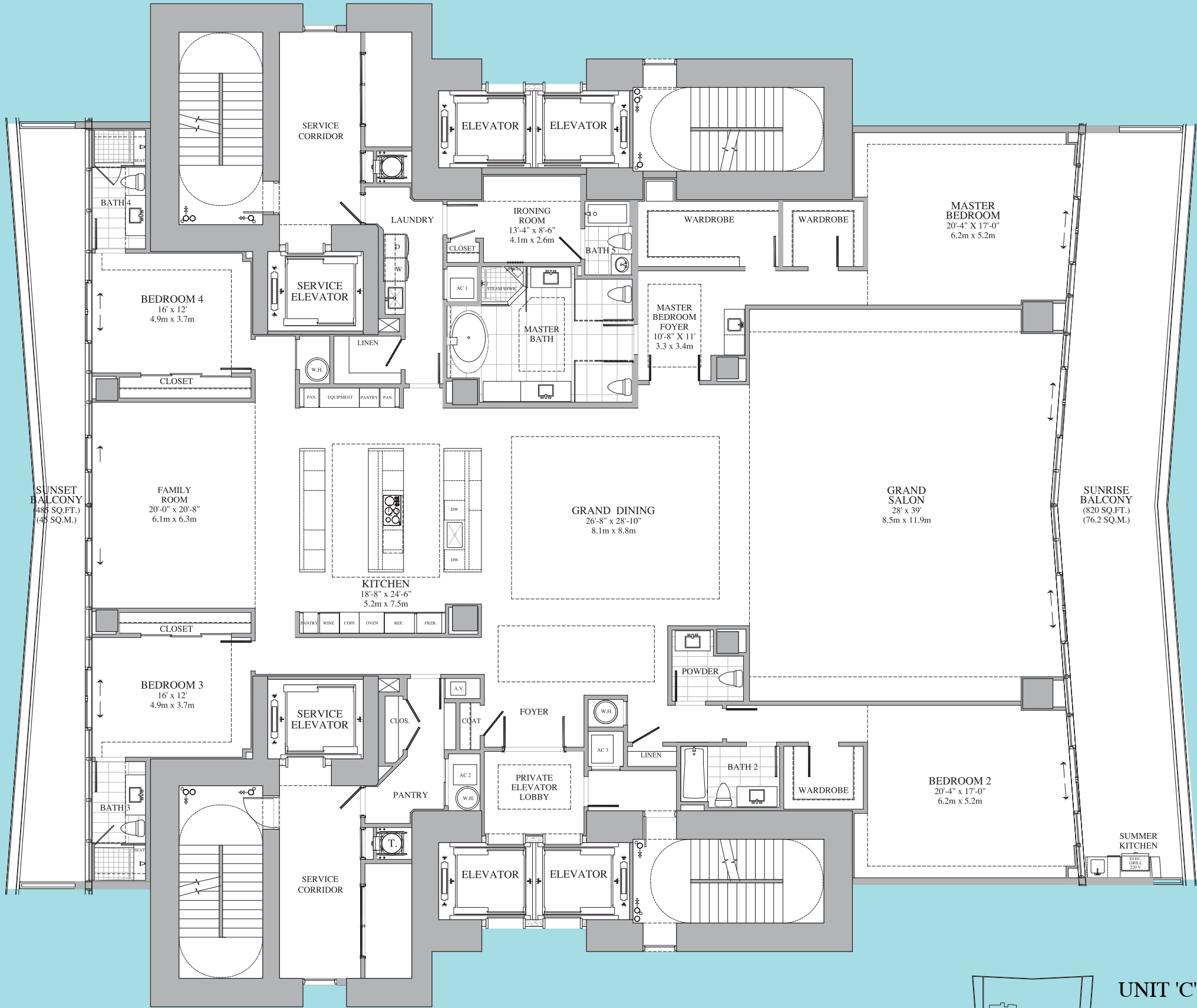
UNIT 'B/A COMBINED'

INDOOR LIVING AREA	= 6,740 SQ.FT. / 626.2 SQ. M.
OUTDOOR LIVING AREA	= 1,510 SQ.FT. / 140.3 SQ. M.
TOTAL LIVING AREA	= 8,250 SQ.FT. / 766.5 SQ. M.
PAINT-TO-PAINT AREA	= 6,230 SQ.FT. / 578.8 SQ. M.



ORAL REPRESENTATIONS CANNOT BE RELIED UPON AS CORRECTLY STATING REPRESENTATIONS OF THE DEVELOPER. FOR CORRECT REPRESENTATIONS, MAKE REFERENCE TO THIS BROCHURE AND TO THE DOCUMENTS REQUIRED BY SECTION 718.503, FLORIDA STATUTES, TO BE FURNISHED BY A DEVELOPER TO A BUYER OR LESSEE. THIS IS NOT AN OFFER FOR CONTRACT OR SALE IN THE STATES OF NY, NJ OR MASS.

UNIT C



UNIT 'C'

INDOOR LIVING AREA	= 6,225 SQ.FT. / 578.3 SQ. M.
OUTDOOR LIVING AREA	= 1,305 SQ.FT. / 121.2 SQ. M.
TOTAL LIVING AREA	= 7,530 SQ.FT. / 699.5 SQ. M.
PAINT-TO-PAINT AREA	= 5,717 SQ.FT. / 531.1 SQ. M.



ORAL REPRESENTATIONS CANNOT BE RELIED UPON AS CORRECTLY STATING REPRESENTATIONS OF THE DEVELOPER. FOR CORRECT REPRESENTATIONS, MAKE REFERENCE TO THIS BROCHURE AND TO THE DOCUMENTS REQUIRED BY SECTION 718.503, FLORIDA STATUTES, TO BE FURNISHED BY A DEVELOPER TO A BUYER OR LESSEE. THIS IS NOT AN OFFER FOR CONTRACT OR SALE IN THE STATES OF NY, NJ OR MASS.