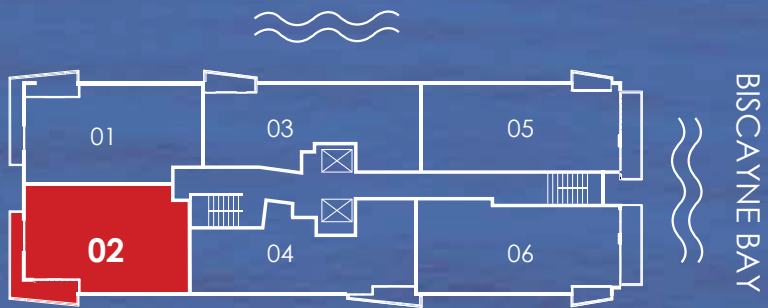


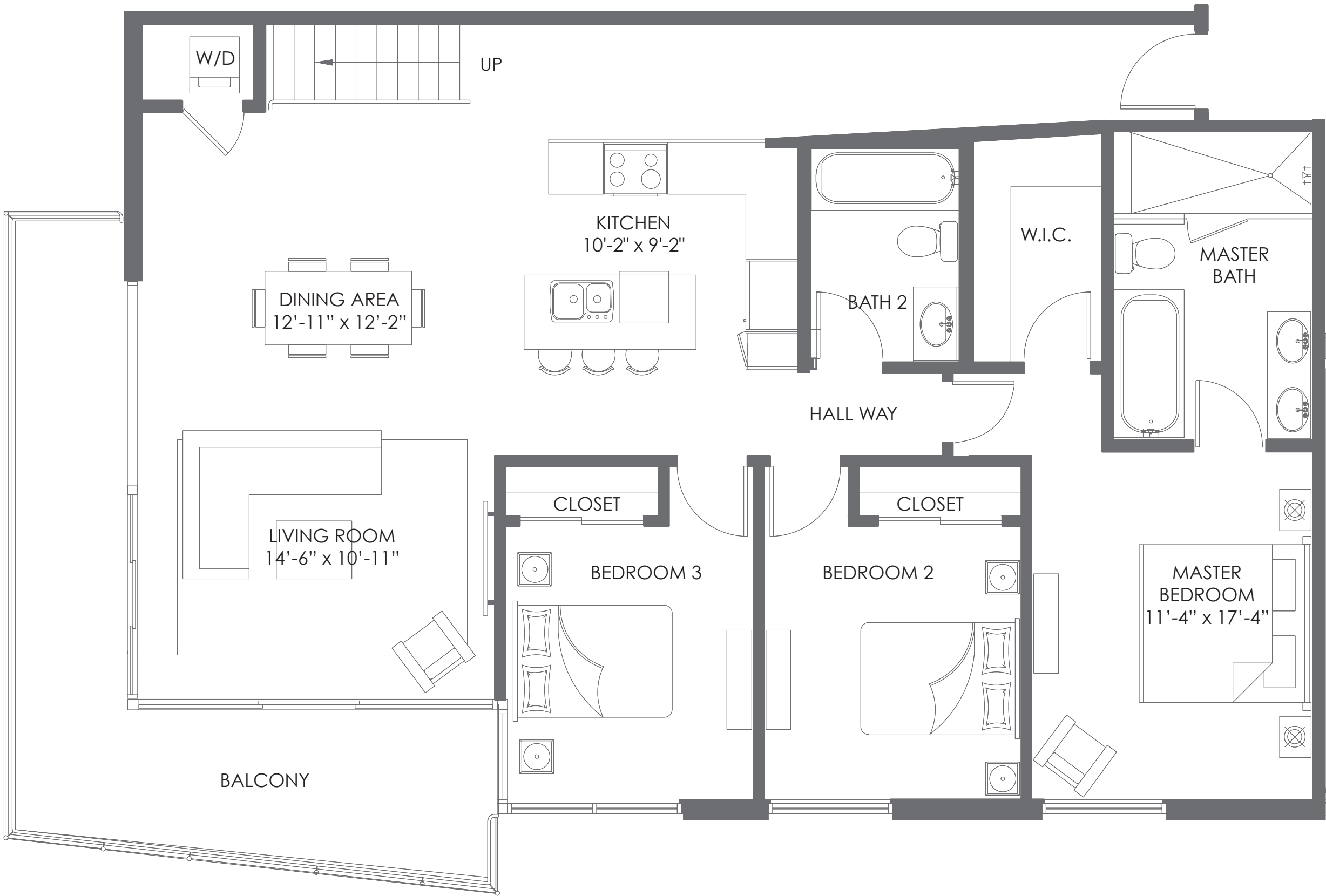
PENTHOUSE02

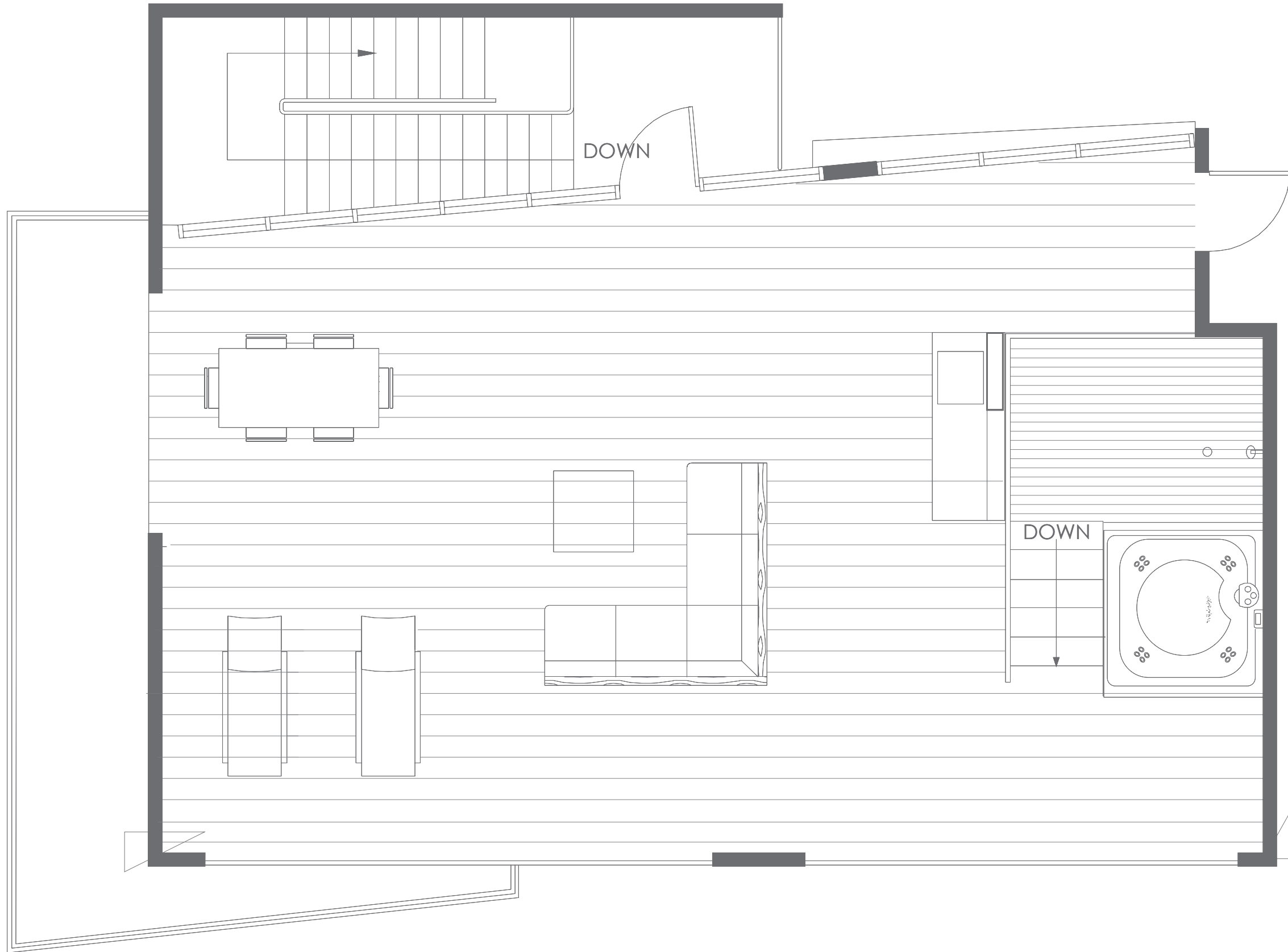
3 BEDROOMS / 2 BATHROOMS

A/C AREA	1,651 S.F. (153.3 M ²)
BALCONIES	228 S.F. (21.2 M ²)
ROOF TERRACE	1,220 S.F. (113.3 M ²)
TOTAL	3,099 S.F. (287.8 M ²)



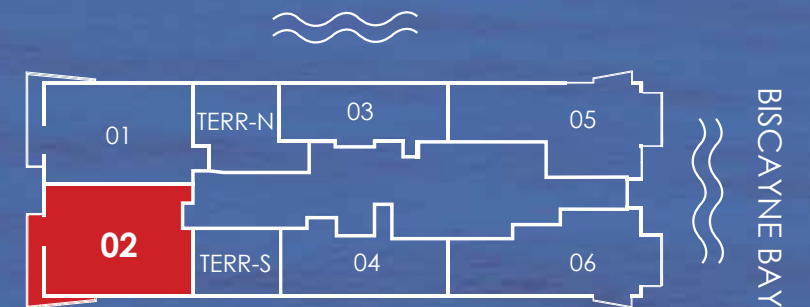
PENTHOUSES 19TH FLOOR





TERRACE02

ROOF TERRACE | 1,220 S.F. (113.3 M²)



PENTHOUSES 20TH FLOOR

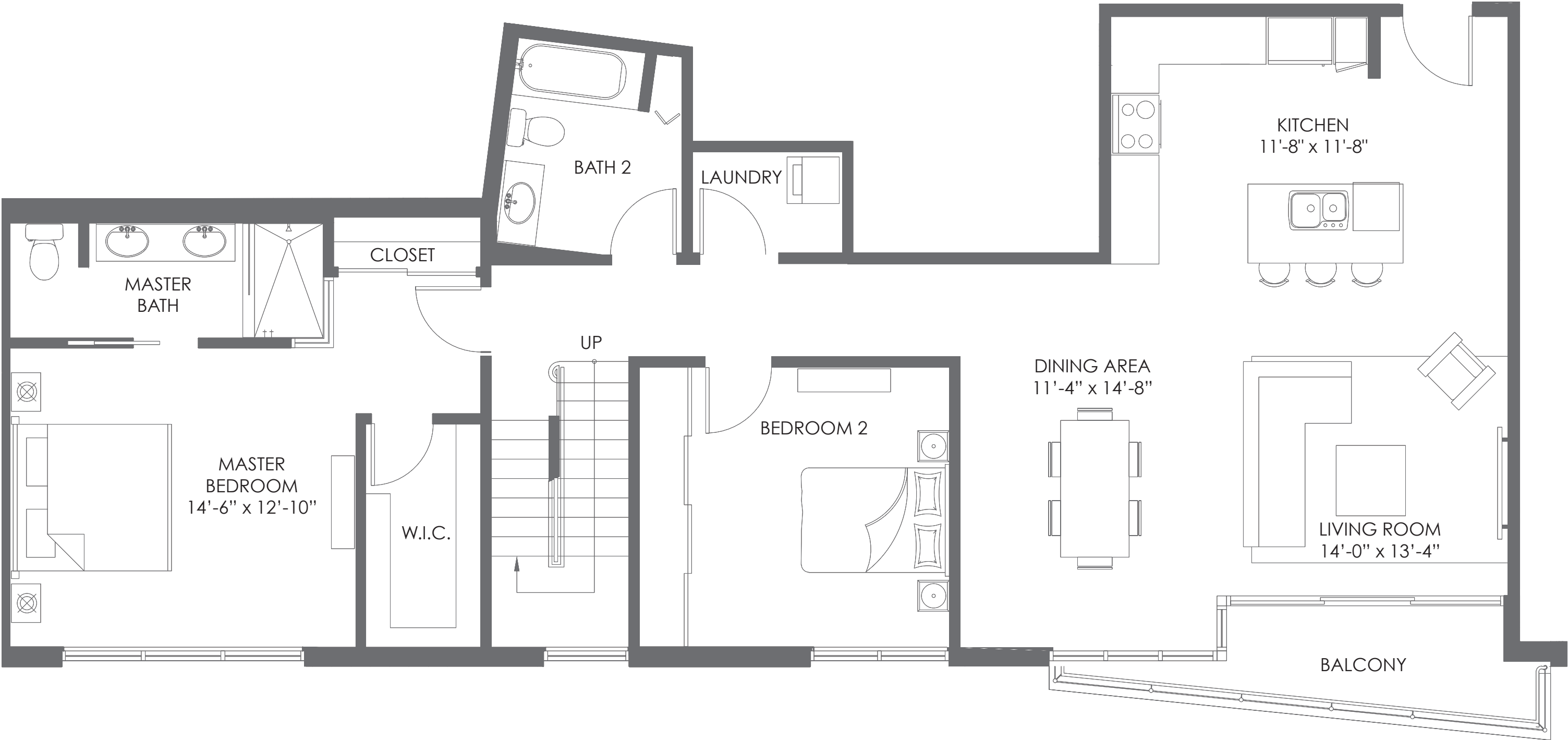
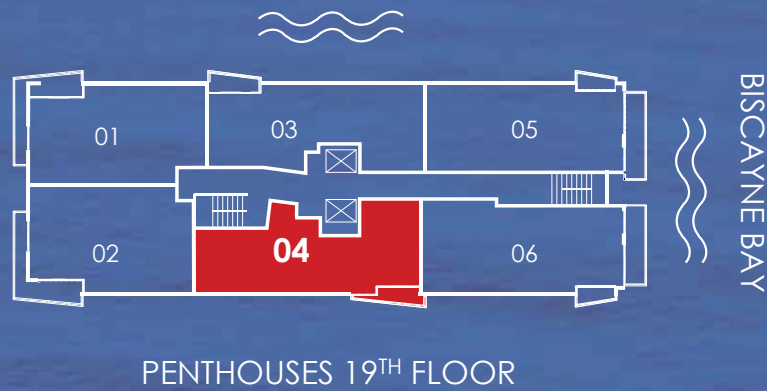


Stated dimensions are measured to the exterior boundaries of the exterior walls and the centerline of interior demising walls and in fact vary from the dimensions that would be determined by using the description and definition of the "unit" set forth in the declaration. All floor plans and development plans are approximate and subject to change.

PENTHOUSE 04

2 BEDROOMS / 2 BATHROOMS

A/C AREA	1,448 S.F. (134.5 M ²)
BALCONIES	79 S.F. (7.3 M ²)
ROOF TERRACE	728 S.F. (67.6 M ²)
TOTAL	2,255 S.F. (209.4 M ²)



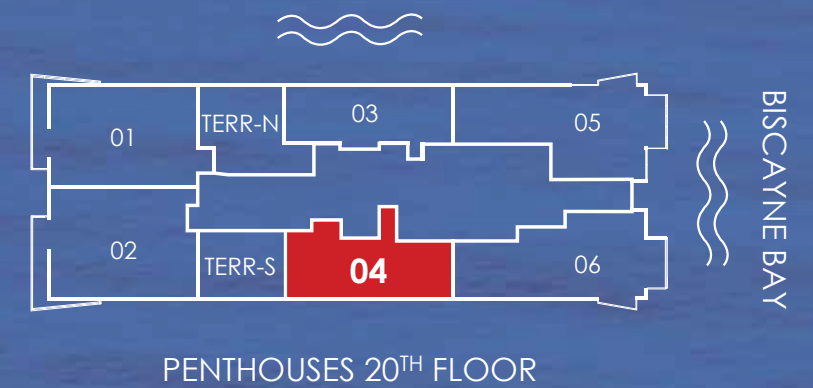
THE CRIMSON
WATERFRONT RESIDENCES

WWW.CRIMSONMIAMI.COM



TERRACE04

ROOF TERRACE | 728 S.F. (67.6 M²)

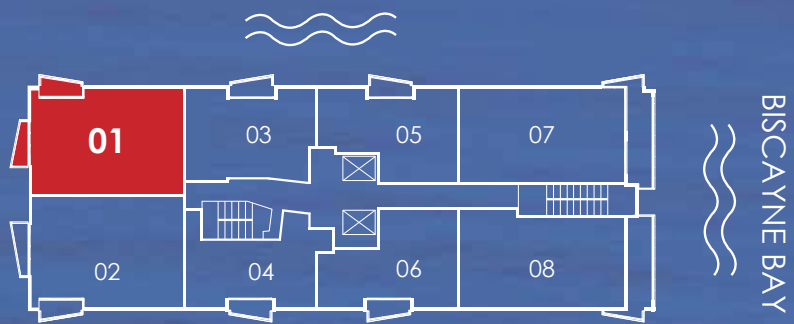


Stated dimensions are measured to the exterior boundaries of the exterior walls and the centerline of interior demising walls and in fact vary from the dimensions that would be determined by using the description and definition of the "unit" set forth in the declaration. All floor plans and development plans are approximate and subject to change.

RESIDENCE01

2 BEDROOMS / 2 BATHROOMS

A/C AREA	1,254 S.F. (116.5 M ²)
BALCONIES	100 S.F. (9.2 M ²)
TOTAL	1,354 S.F. (125.7 M ²)



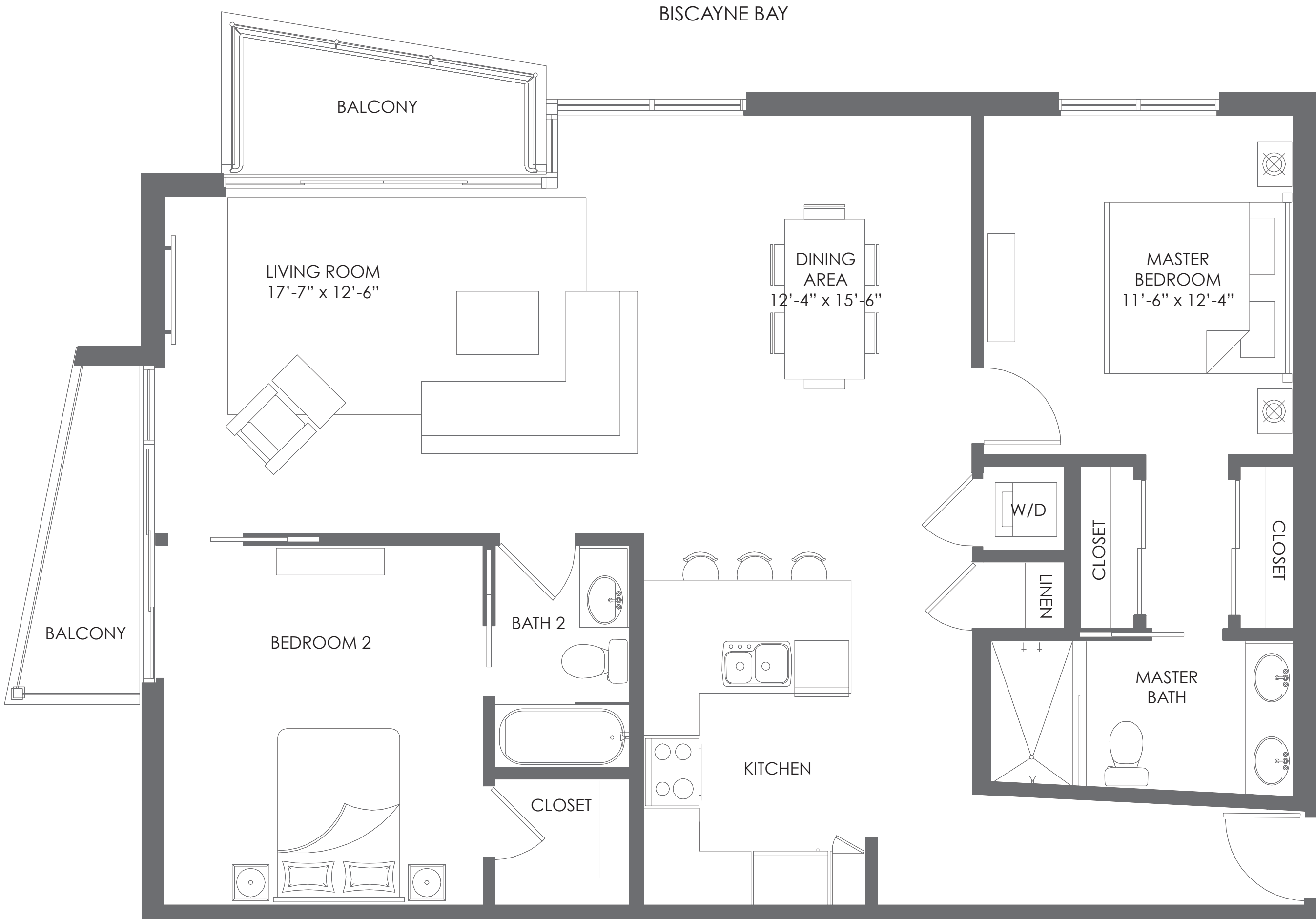
FLOORS 9 TO 18

THE CRIMSON
WATERFRONT RESIDENCES

WWW.CRIMSONMIAMI.COM



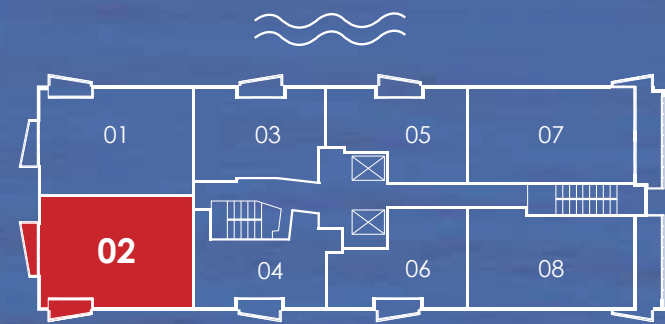
Stated dimensions are measured to the exterior boundaries of the exterior walls and the centerline of interior demising walls and in fact vary from the dimensions that would be determined by using the description and definition of the "unit" set forth in the declaration. All floor plans and development plans are approximate and subject to change.



RESIDENCE02

2 BEDROOMS / 2 BATHROOMS

A/C AREA 1,311 S.F. (121.8 M²)
BALCONIES 105 S.F. (9.7 M²)
TOTAL 1,416 S.F. (131.5 M²)



FLOORS 8 TO 18

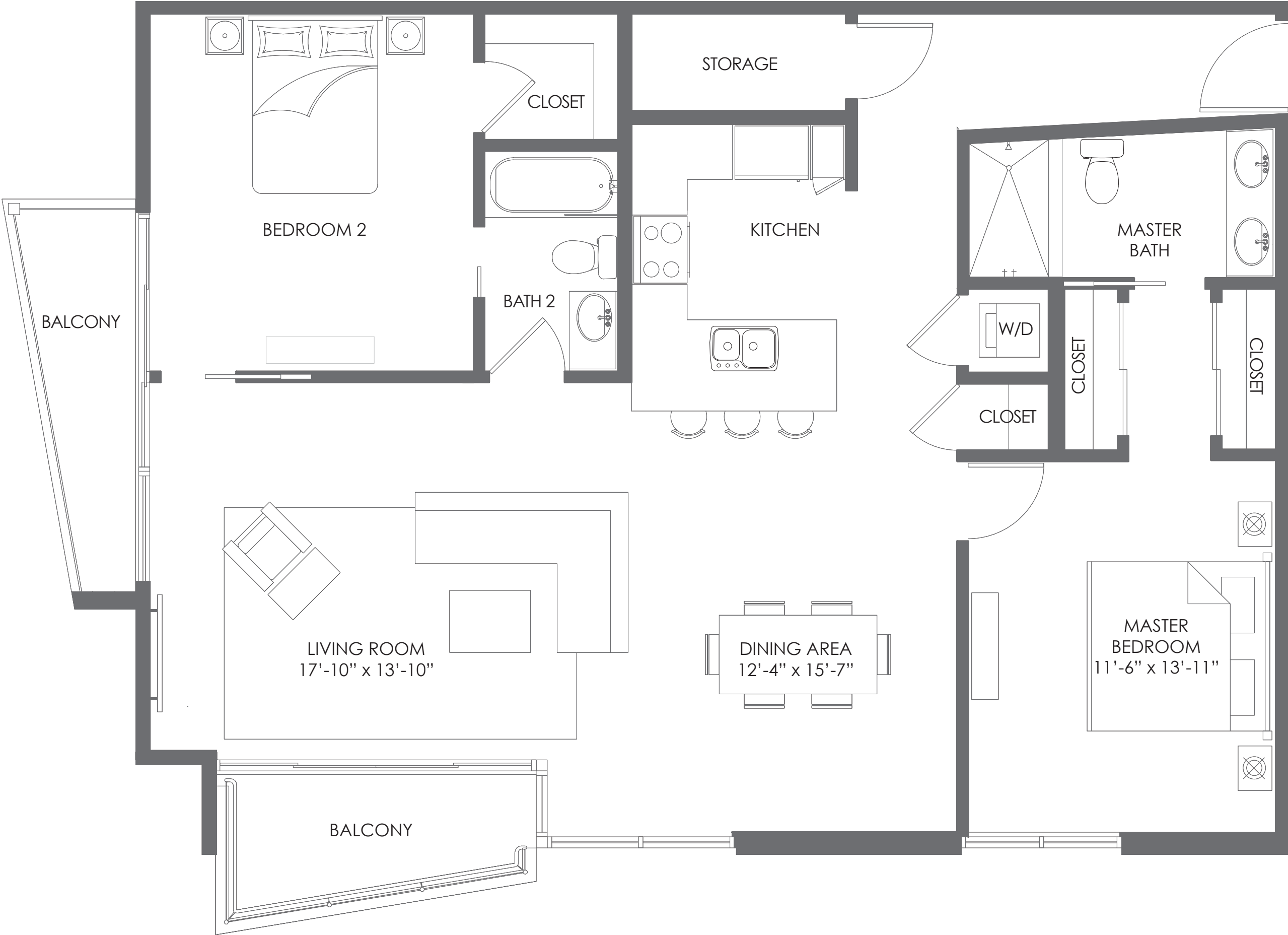


THE CRIMSON
WATERFRONT RESIDENCES

WWW.CRIMSONMIAMI.COM



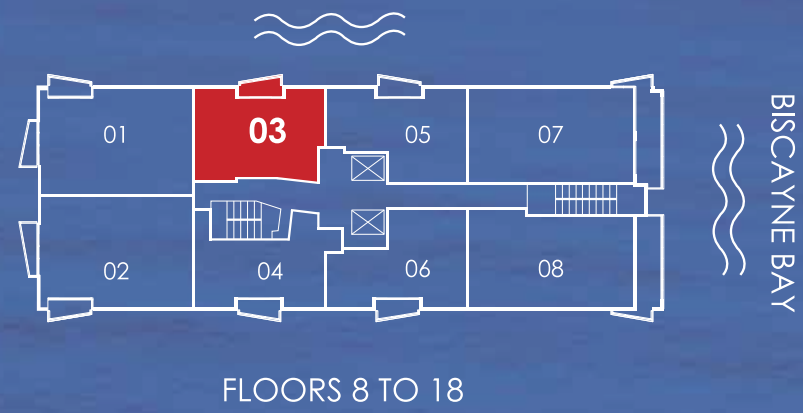
Stated dimensions are measured to the exterior boundaries of the exterior walls and the centerline of interior demising walls and in fact vary from the dimensions that would be determined by using the description and definition of the "unit" set forth in the declaration. All floor plans and development plans are approximate and subject to change.



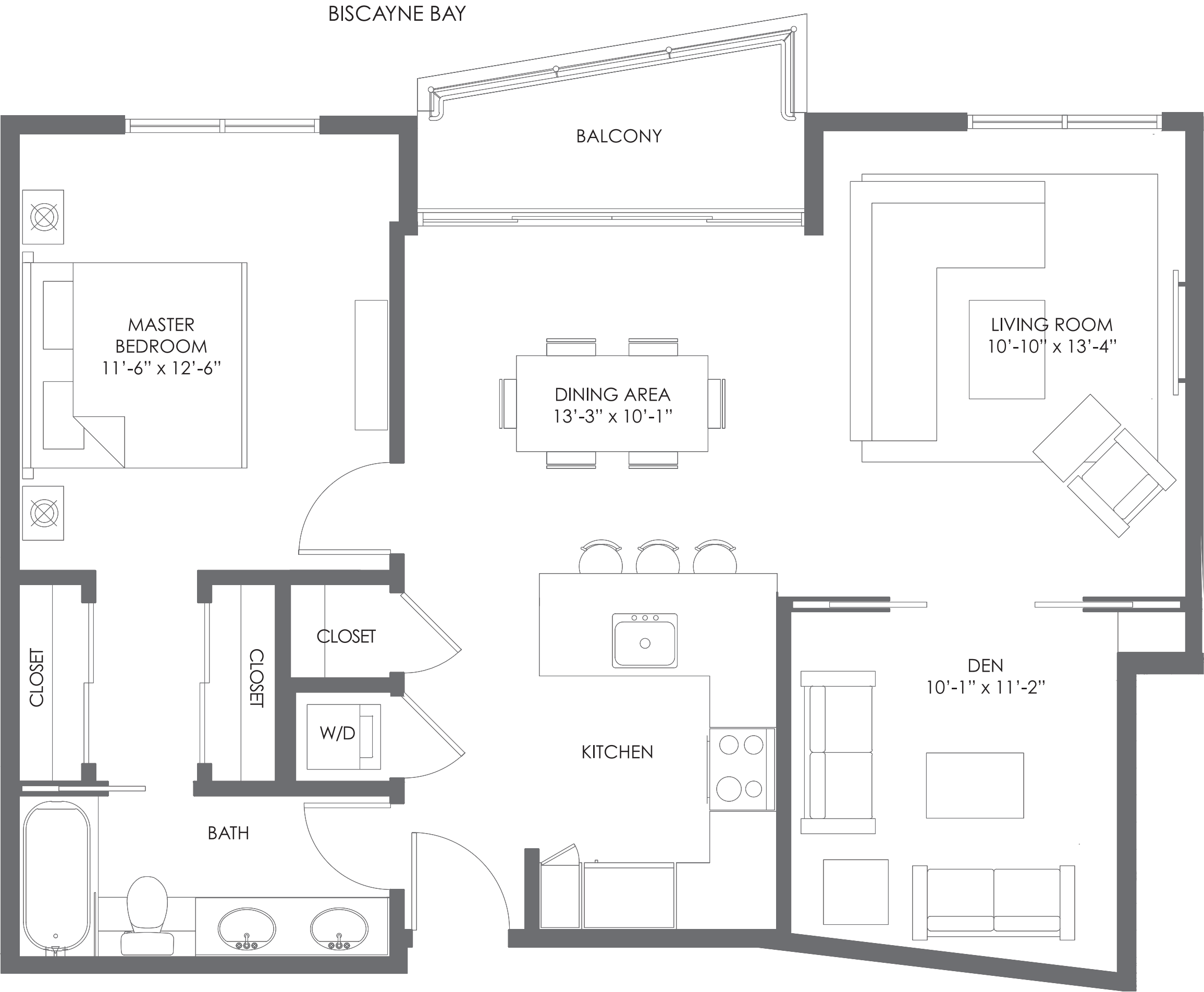
RESIDENCE03

1 BEDROOM + DEN / 1 BATHROOM

A/C AREA	890 S.F. (82.6 M ²)
BALCONIES	60 S.F. (5.5 M ²)
TOTAL	950 S.F. (88.1 M ²)



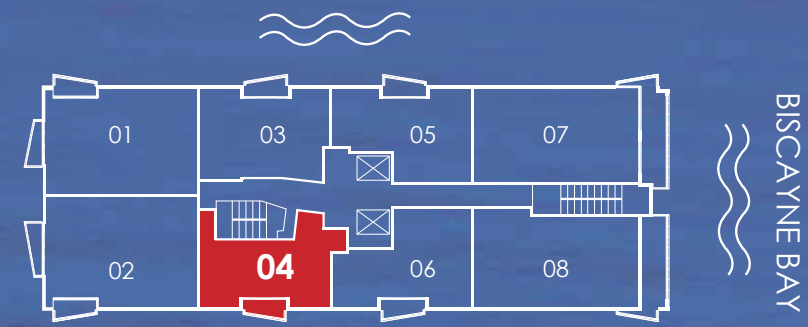
Stated dimensions are measured to the exterior boundaries of the exterior walls and the centerline of interior demising walls and in fact vary from the dimensions that would be determined by using the description and definition of the "unit" set forth in the declaration. All floor plans and development plans are approximate and subject to change.



RESIDENCE04

1 BEDROOM / 1 BATHROOM

	FLOORS 8-14	FLOORS 15-18
A/C AREA	807 S.F. (74.9 M ²)	814 S.F. (75.6 M ²)
BALCONIES	60 S.F. (5.5 M ²)	60 S.F. (5.5 M ²)
TOTAL	867 S.F. (80.4 M ²)	874 S.F. (81.1 M ²)



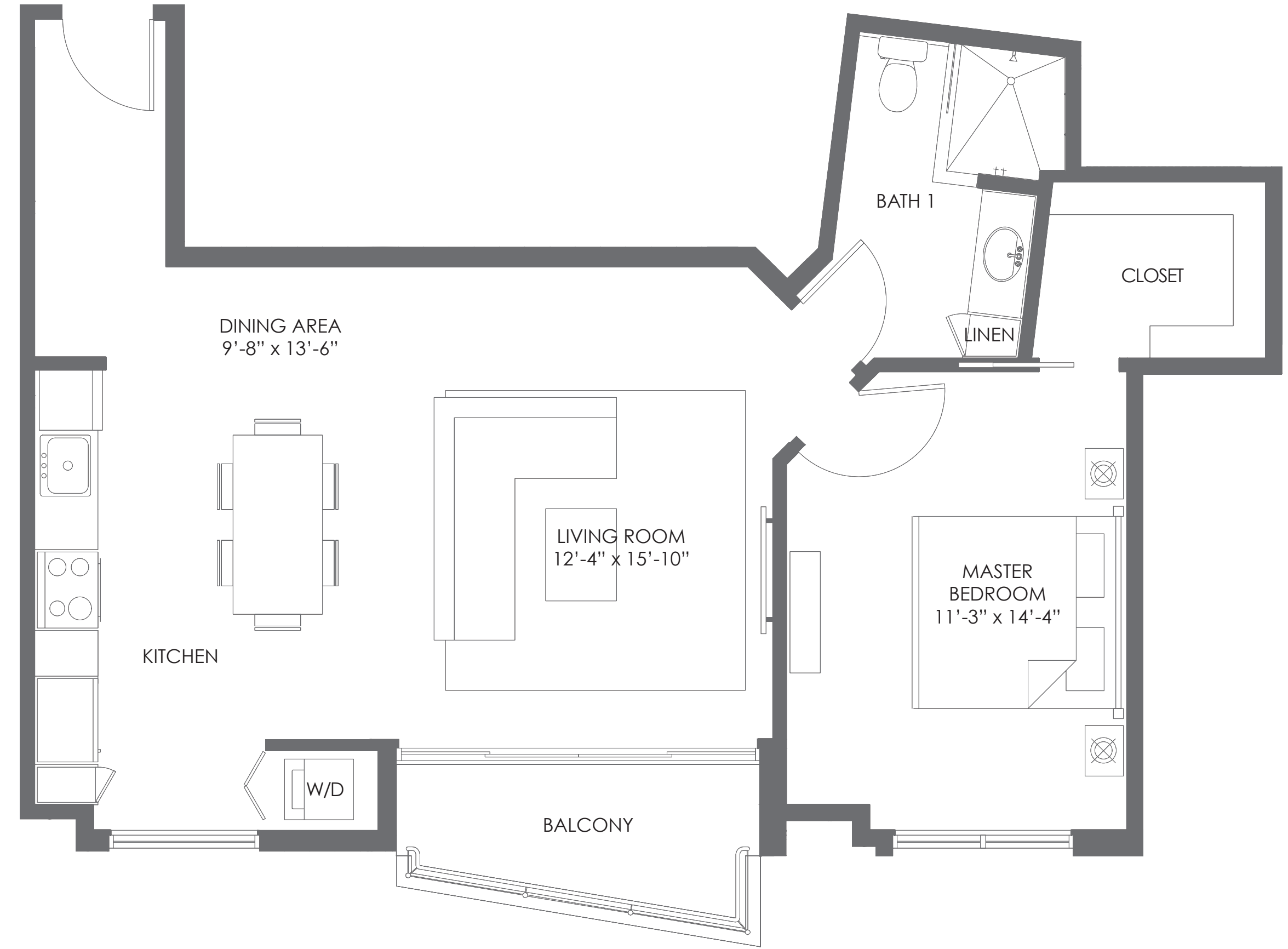


THE CRIMSON
WATERFRONT RESIDENCES

WWW.CRIMSONMIAMI.COM



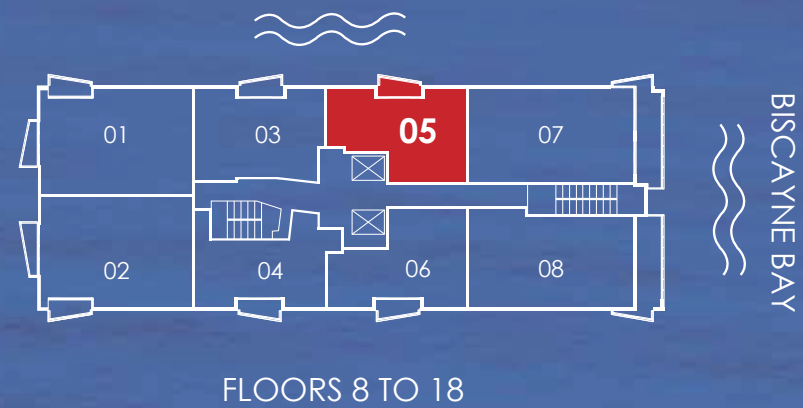
Stated dimensions are measured to the exterior boundaries of the exterior walls and the centerline of interior demising walls and in fact vary from the dimensions that would be determined by using the description and definition of the "unit" set forth in the declaration. All floor plans and development plans are approximate and subject to change.



RESIDENCE05

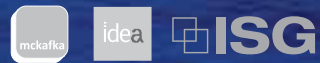
1 BEDROOM / 1 BATHROOM

A/C AREA	847 S.F. (78.6 M ²)
BALCONIES	60 S.F. (5.5 M ²)
TOTAL	907 S.F. (84.1 M ²)

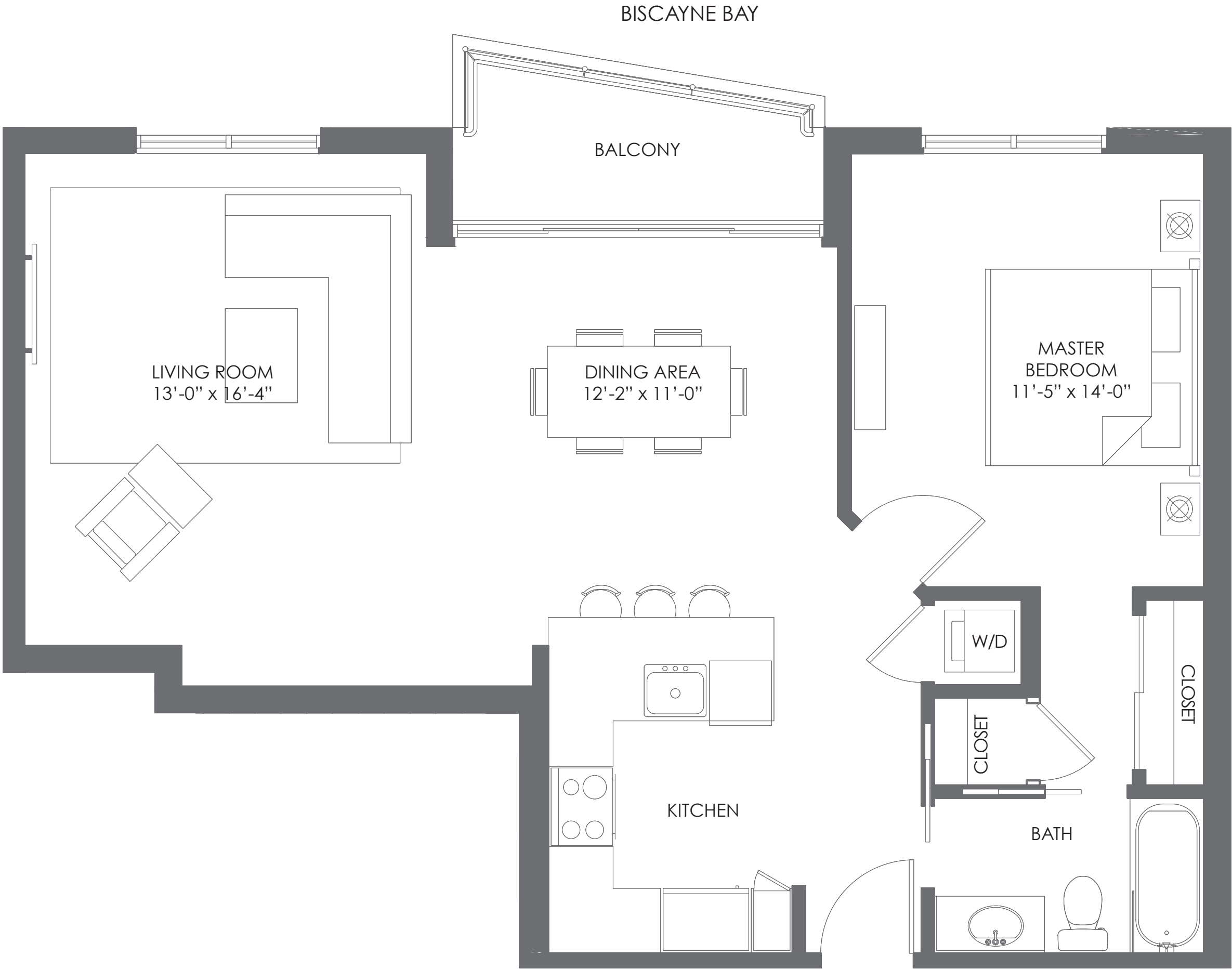


THE CRIMSON
WATERFRONT RESIDENCES

WWW.CRIMSONMIAMI.COM



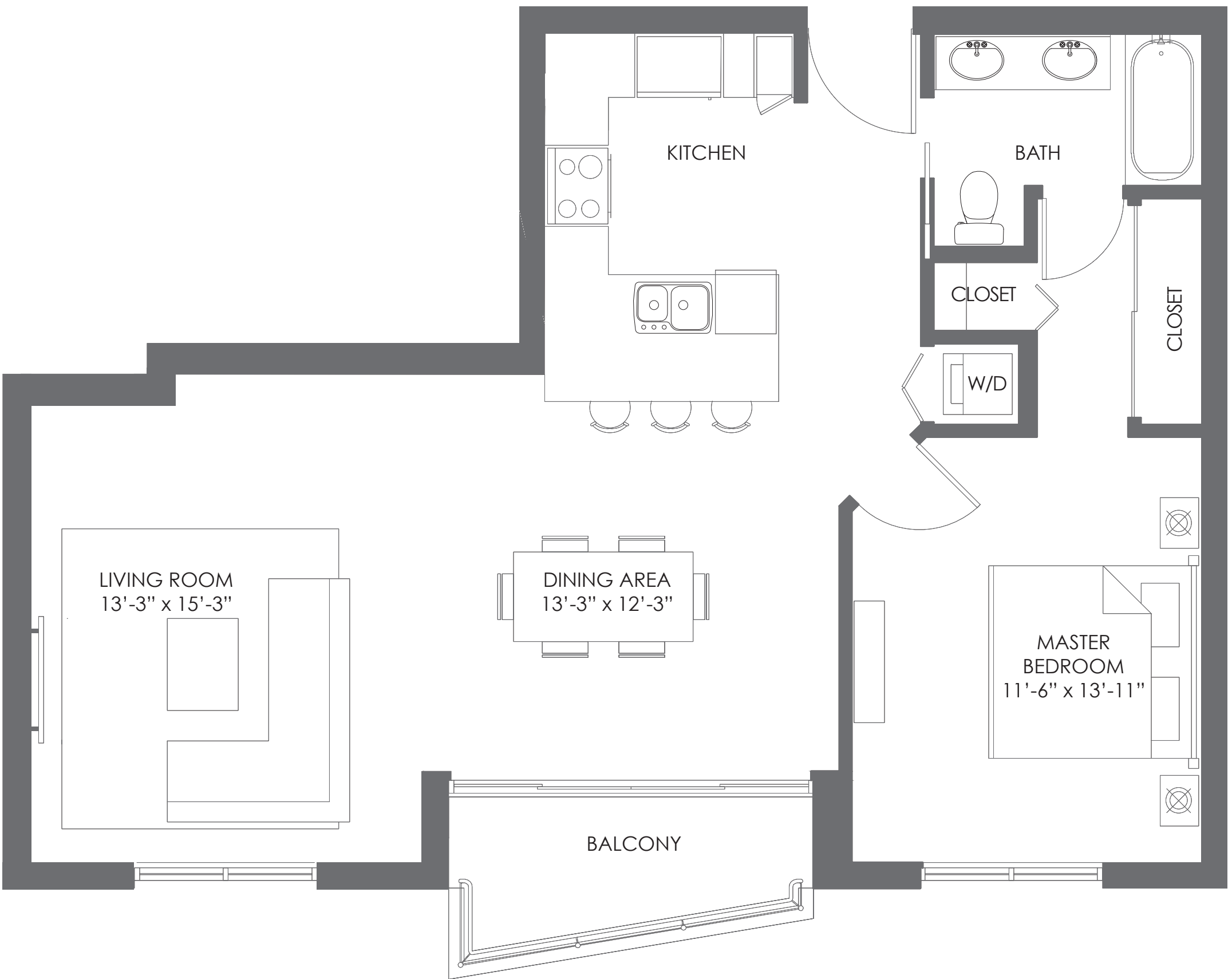
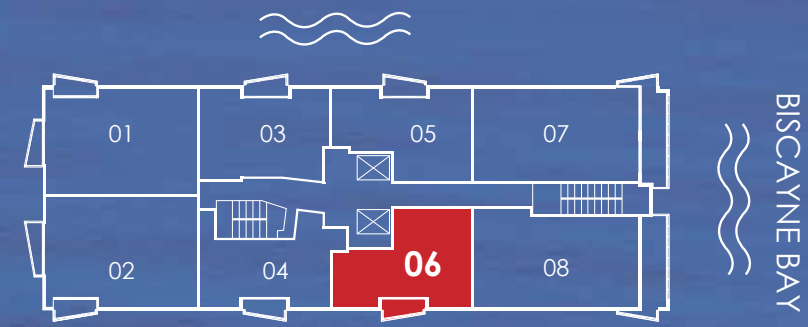
Stated dimensions are measured to the exterior boundaries of the exterior walls and the centerline of interior demising walls and in fact vary from the dimensions that would be determined by using the description and definition of the "unit" set forth in the declaration. All floor plans and development plans are approximate and subject to change.



RESIDENCE06

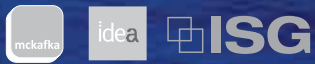
1 BEDROOM / 1 BATHROOM

	FLOORS 9-14	FLOORS 15-18
A/C AREA	867 S.F. (80.5 M ²)	878 S.F. (81.5 M ²)
BALCONIES	60 S.F. (5.5 M ²)	60 S.F. (5.5 M ²)
TOTAL	927 S.F. (86 M ²)	938 S.F. (87 M ²)



THE CRIMSON
WATERFRONT RESIDENCES

WWW.CRIMSONMIAMI.COM

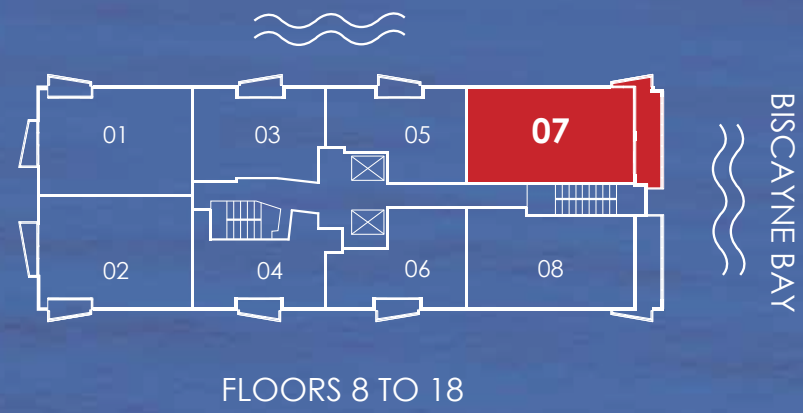


Stated dimensions are measured to the exterior boundaries of the exterior walls and the centerline of interior demising walls and in fact vary from the dimensions that would be determined by using the description and definition of the "unit" set forth in the declaration. All floor plans and development plans are approximate and subject to change.

RESIDENCE07

2 BEDROOMS / 2 BATHROOMS

A/C AREA 1,245 S.F. (115.6 M²)
BALCONIES 221 S.F. (20.5 M²)
TOTAL 1,466 S.F. (136.1 M²)



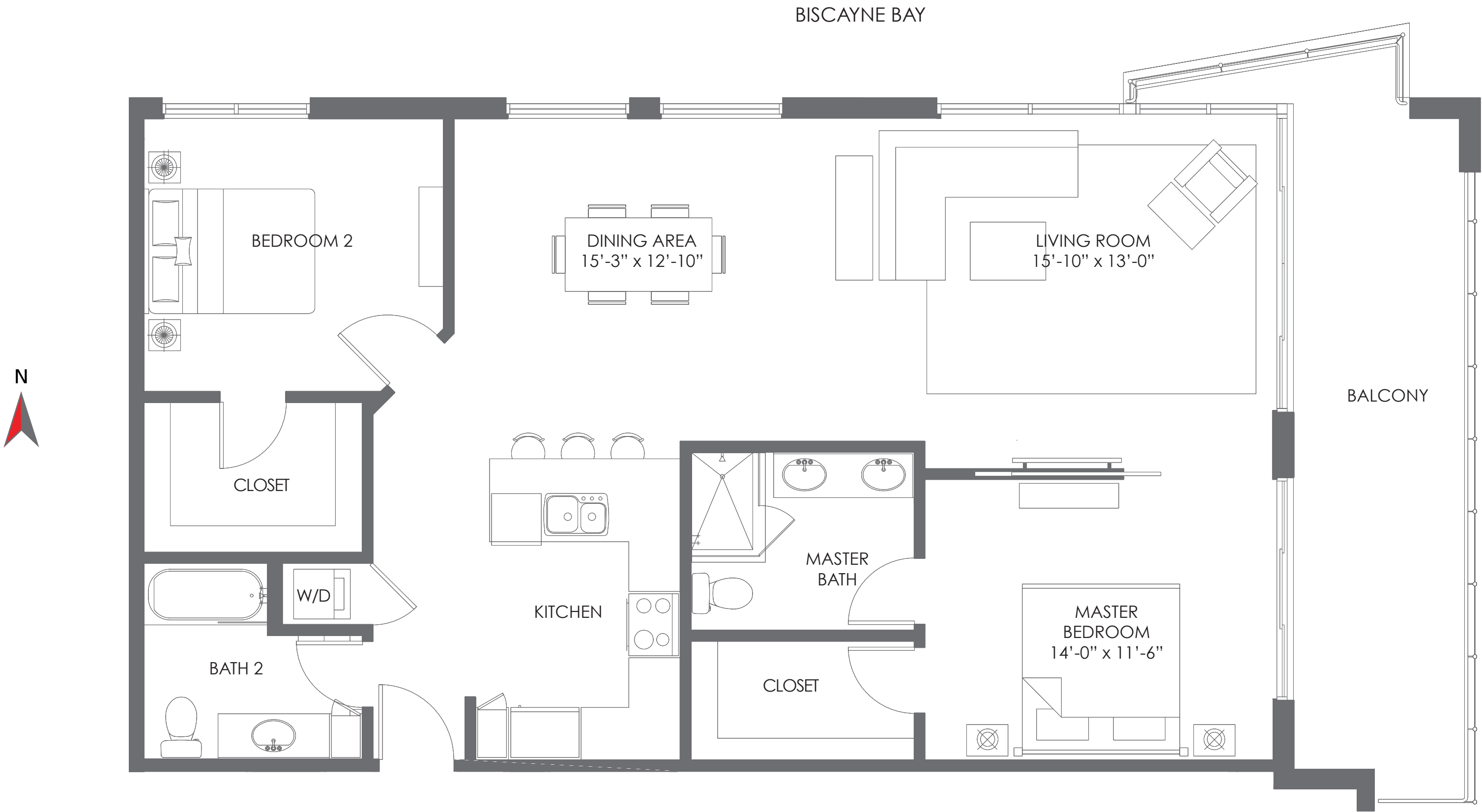


THE CRIMSON
WATERFRONT RESIDENCES

WWW.CRIMSONMIAMI.COM



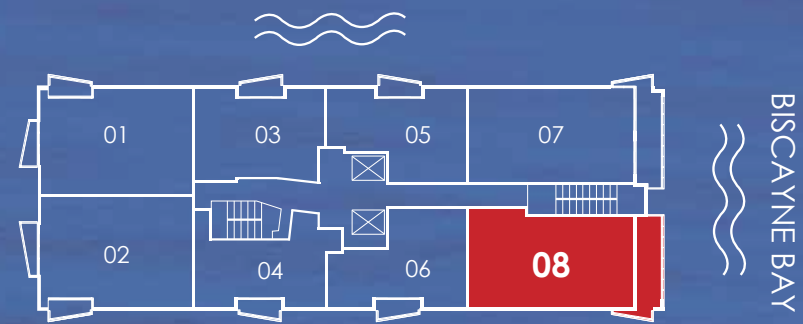
Stated dimensions are measured to the exterior boundaries of the exterior walls and the centerline of interior demising walls and in fact vary from the dimensions that would be determined by using the description and definition of the "unit" set forth in the declaration. All floor plans and development plans are approximate and subject to change.



RESIDENCE08

2 BEDROOMS / 2 BATHROOMS

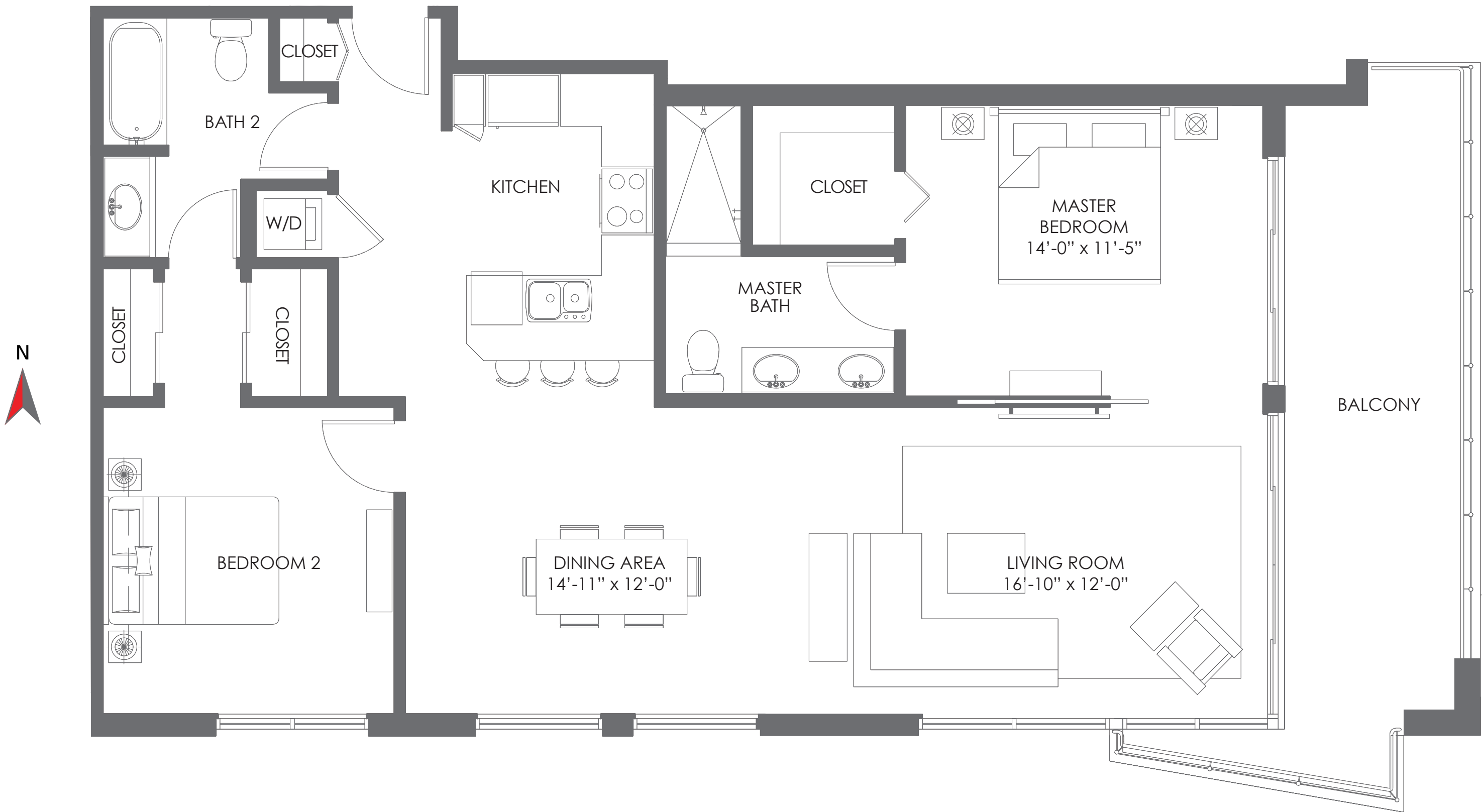
	FLOORS 9-14	FLOORS 15-18
A/C AREA	1,210 S.F. (112.4 M ²)	1,220 S.F. (113.3 M ²)
BALCONIES	211 S.F. (19.6 M ²)	208 S.F. (19.3 M ²)
TOTAL	1,421 S.F. (132 M ²)	1,428 S.F. (132.6 M ²)



 **THE CRIMSON**
WATERFRONT RESIDENCES
WWW.CRIMSONMIAMI.COM



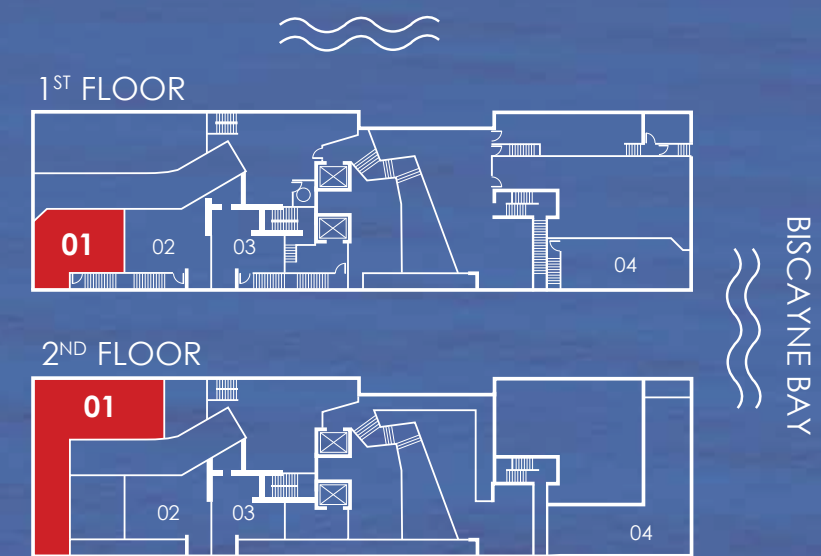
Stated dimensions are measured to the exterior boundaries of the exterior walls and the centerline of interior demising walls and in fact vary from the dimensions that would be determined by using the description and definition of the "unit" set forth in the declaration. All floor plans and development plans are approximate and subject to change.



TOWNHOME01

3 BEDROOMS / 2 1/2 BATHROOMS

1 ST FLOOR	671 S.F. (62.3 M ²)
2 ND FLOOR	1,339 S.F. (124.4 M ²)
TOTAL	2,010 S.F. (186.7 M ²)

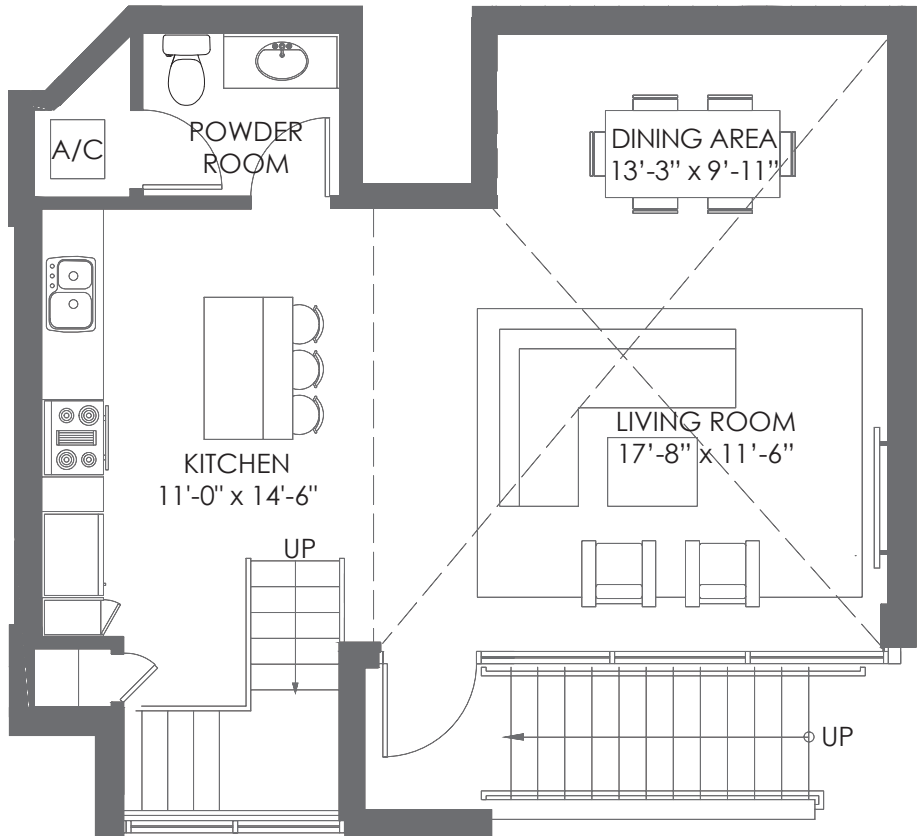


THE CRIMSON
WATERFRONT RESIDENCES

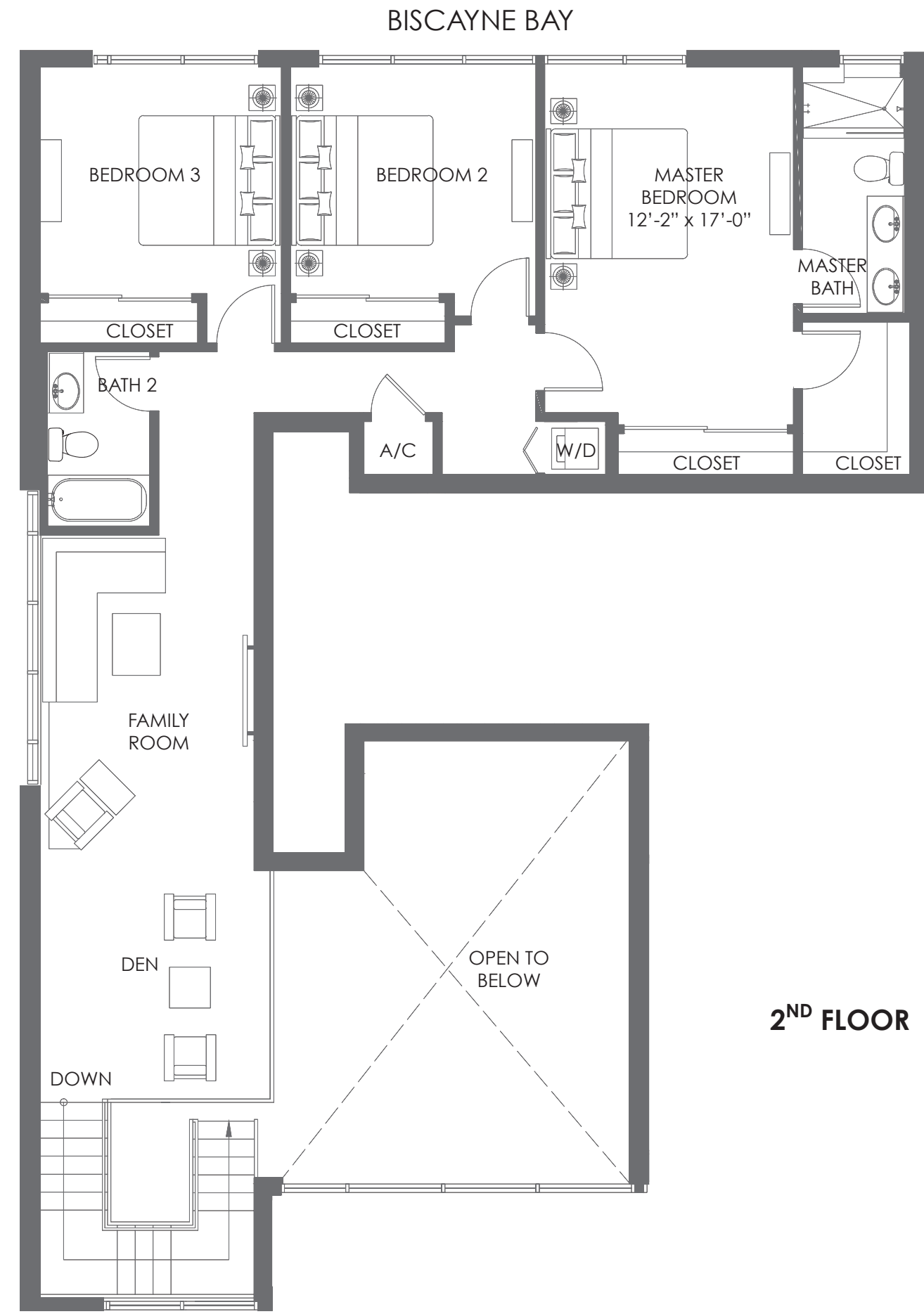
WWW.CRIMSONMIAMI.COM



Stated dimensions are measured to the exterior boundaries of the exterior walls and the centerline of interior demising walls and in fact vary from the dimensions that would be determined by using the description and definition of the "unit" set forth in the declaration. All floor plans and development plans are approximate and subject to change.



1ST FLOOR

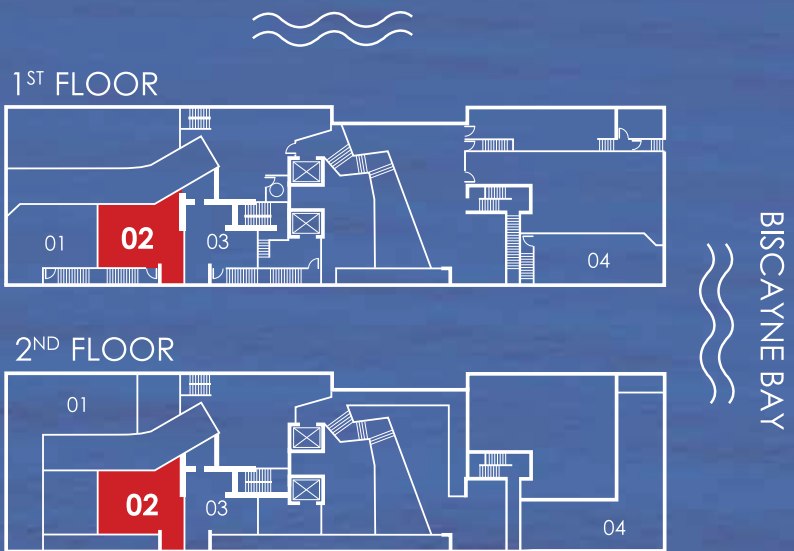


2ND FLOOR

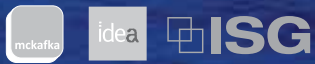
TOWNHOME02

2 BEDROOMS / 2 1/2 BATHROOMS

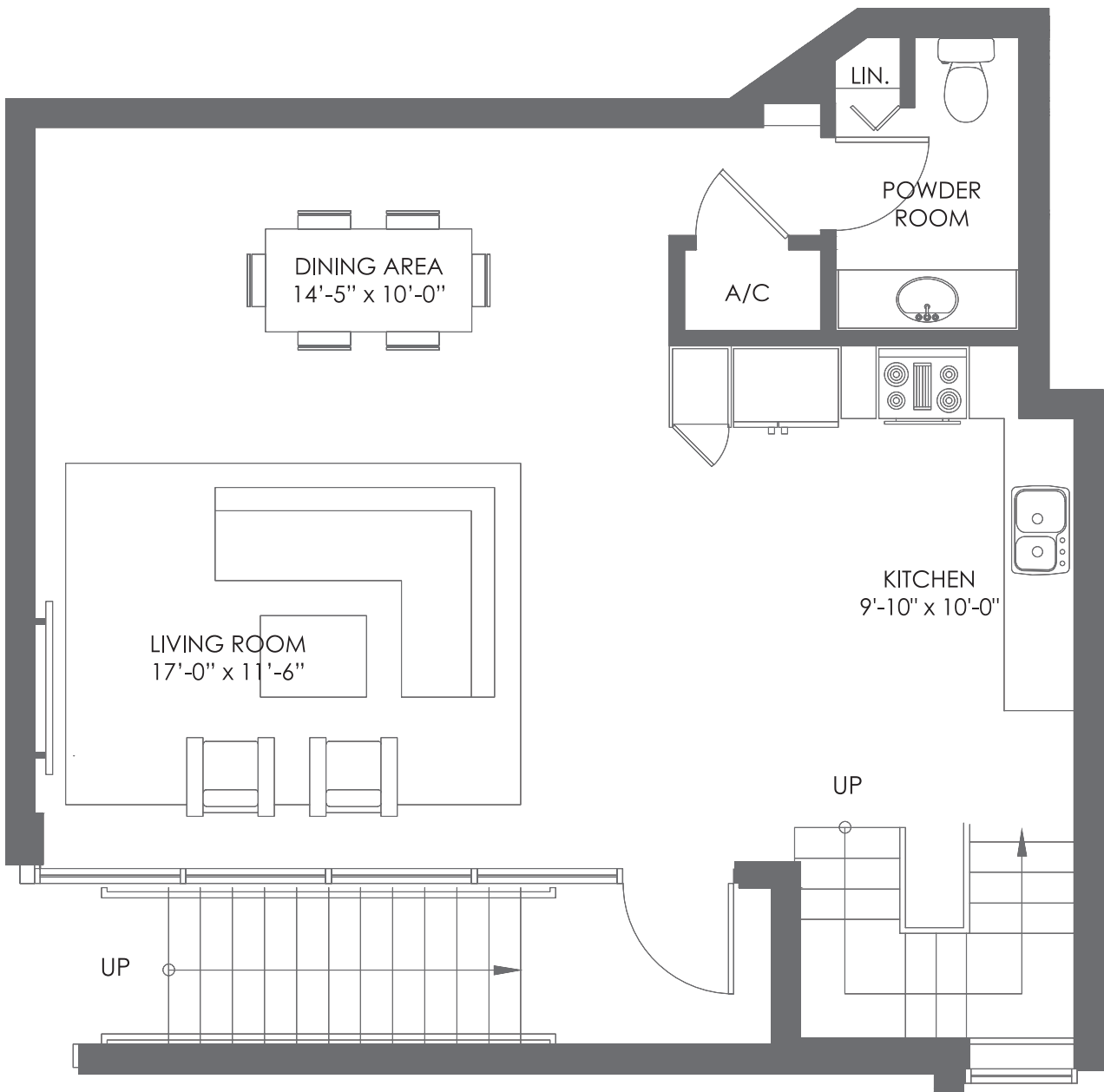
1 ST FLOOR	718 S.F. (66.7 M ²)
2 ND FLOOR	714 S.F. (66.3 M ²)
TOTAL	1,432 S.F. (132.9 M ²)



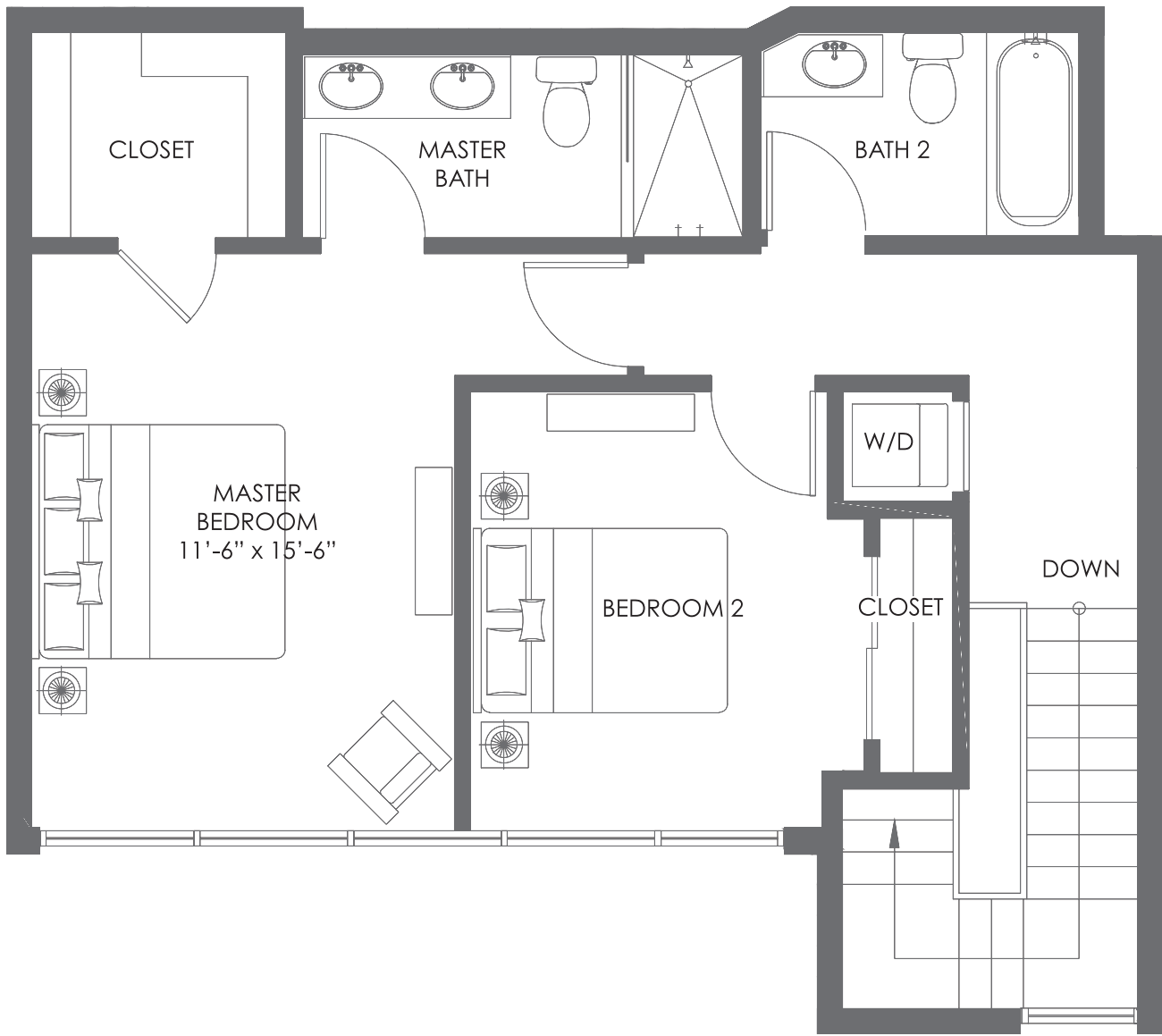
 **THE CRIMSON**
WATERFRONT RESIDENCES
WWW.CRIMSONMIAMI.COM



Stated dimensions are measured to the exterior boundaries of the exterior walls and the centerline of interior demising walls and in fact vary from the dimensions that would be determined by using the description and definition of the "unit" set forth in the declaration. All floor plans and development plans are approximate and subject to change.



1ST FLOOR

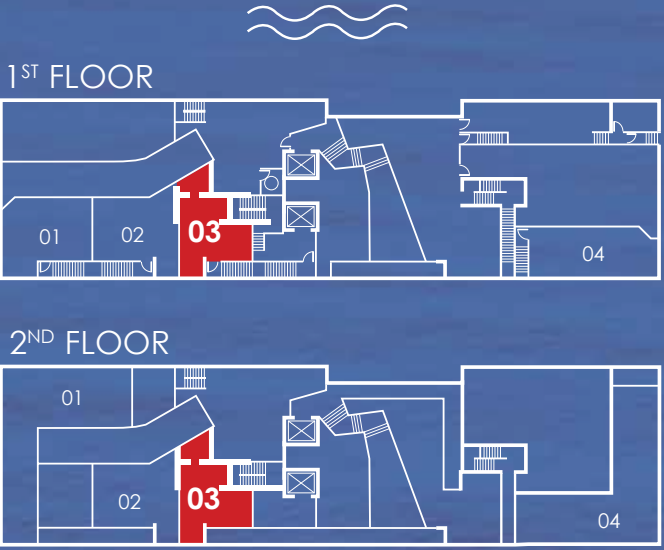


2ND FLOOR

TOWNHOME03

1 BEDROOM + DEN / 1 1/2 BATHROOMS

1 ST FLOOR	600 S.F. (55.7 M ²)
2 ND FLOOR	732 S.F. (68 M ²)
TOTAL	1,332 S.F. (123.7 M ²)

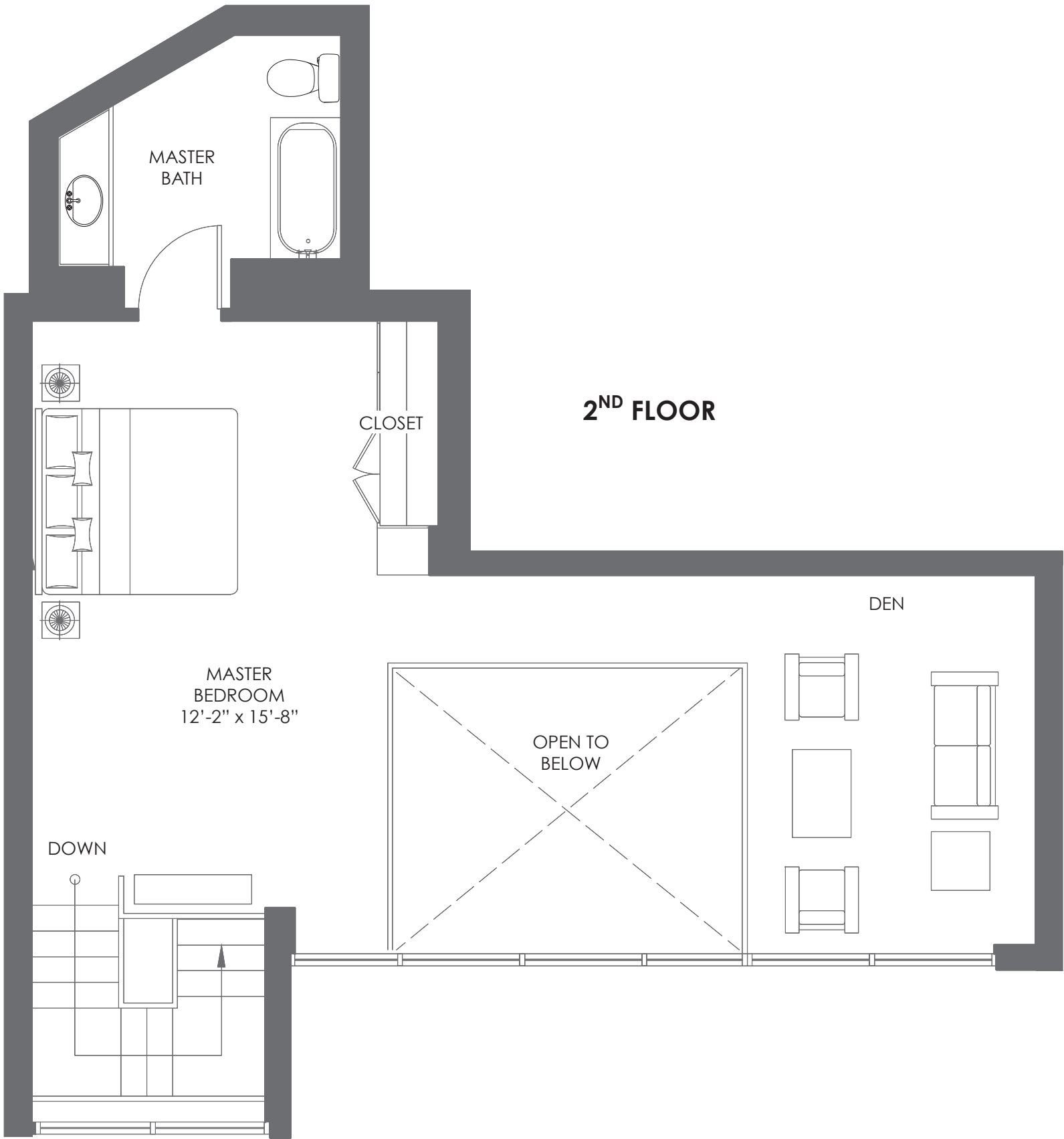
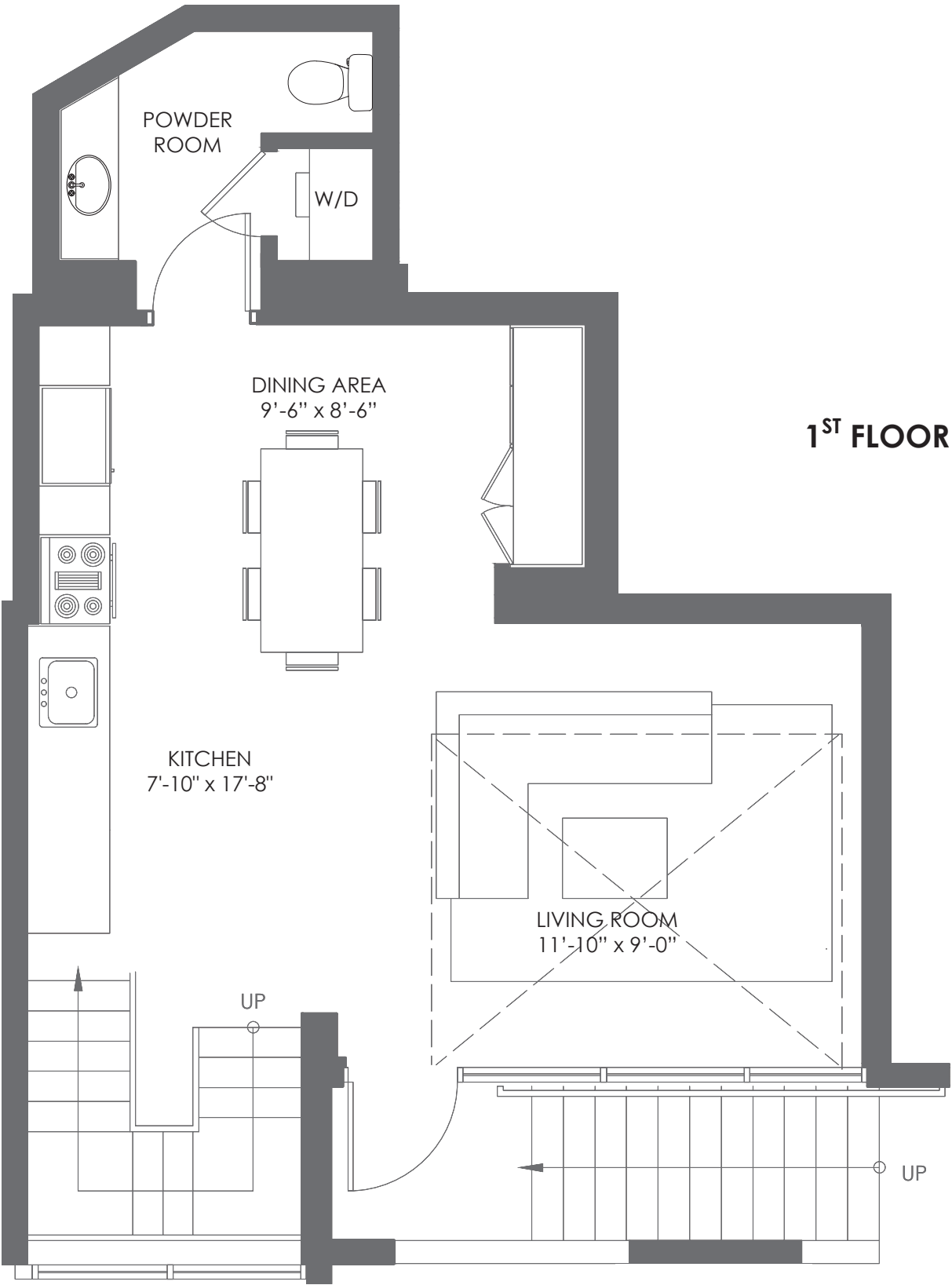


THE CRIMSON
WATERFRONT RESIDENCES

WWW.CRIMSONMIAMI.COM



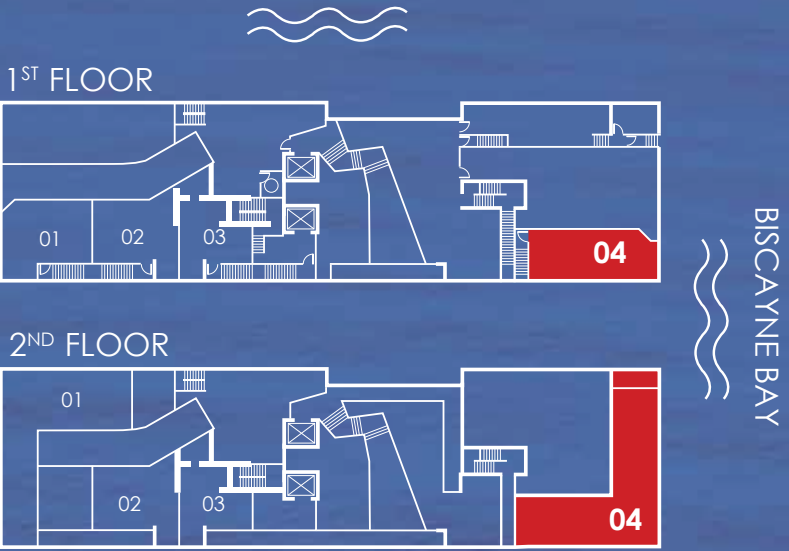
Stated dimensions are measured to the exterior boundaries of the exterior walls and the centerline of interior demising walls and in fact vary from the dimensions that would be determined by using the description and definition of the "unit" set forth in the declaration. All floor plans and development plans are approximate and subject to change.



TOWNHOME04

3 BEDROOMS + DEN / 2 1/2 BATHROOMS

1 ST FLOOR	763 S.F. (70.8 M ²)
2 ND FLOOR	1,209 S.F. (112.3 M ²)
BALCONIES	100 S.F. (9.2 M ²)
TOTAL	1,972 S.F. (183.2 M ²)



THE CRIMSON
WATERFRONT RESIDENCES

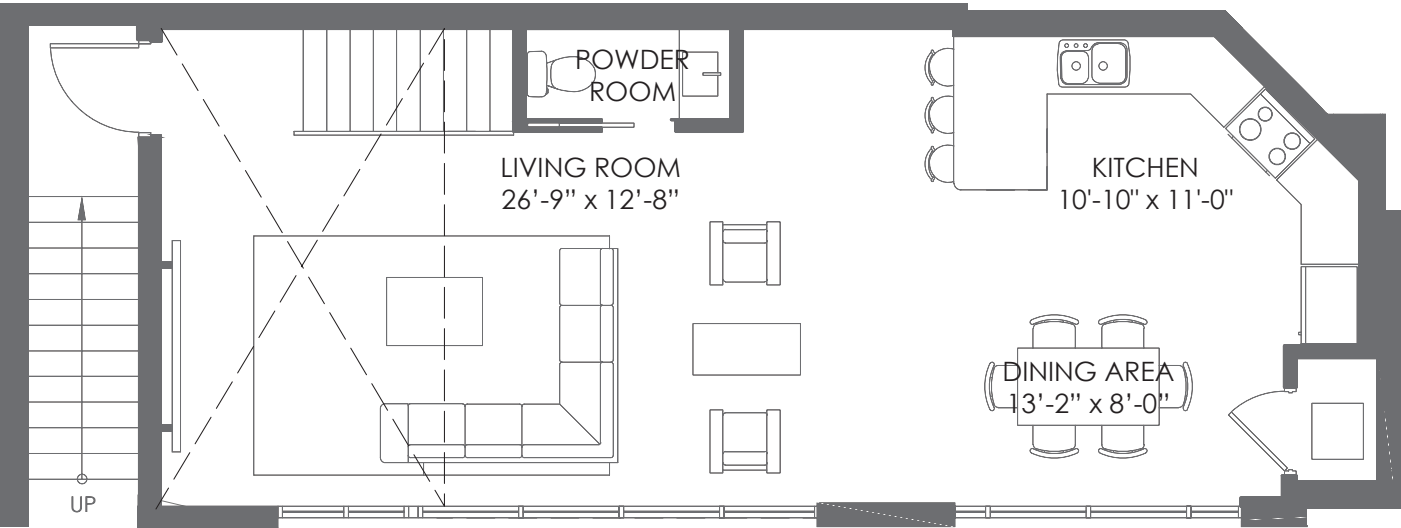
WWW.CRIMSONMIAMI.COM



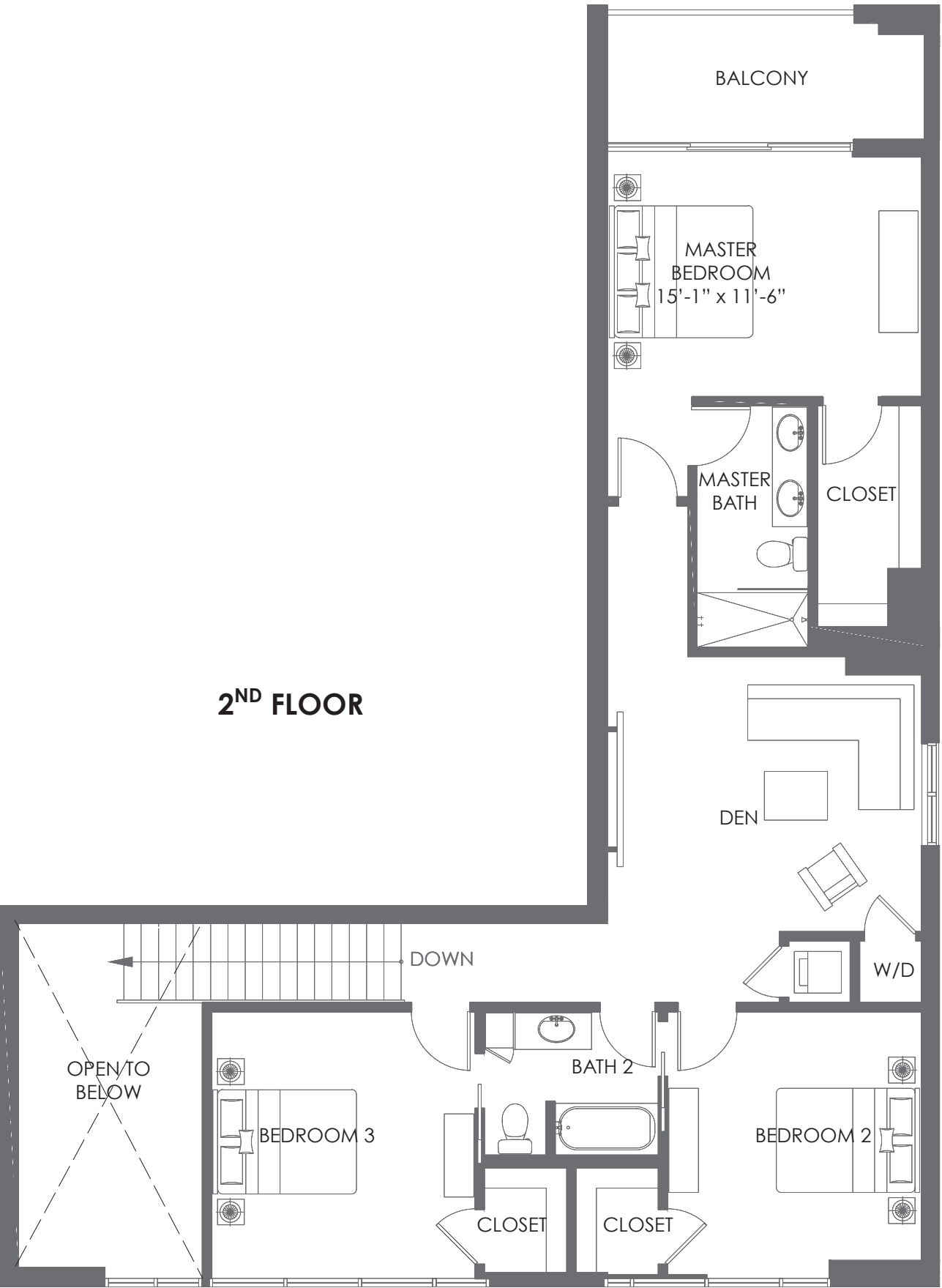
Stated dimensions are measured to the exterior boundaries of the exterior walls and the centerline of interior demising walls and in fact vary from the dimensions that would be determined by using the description and definition of the "unit" set forth in the declaration. All floor plans and development plans are approximate and subject to change.



1ST FLOOR



2ND FLOOR



BISCAYNE BAY